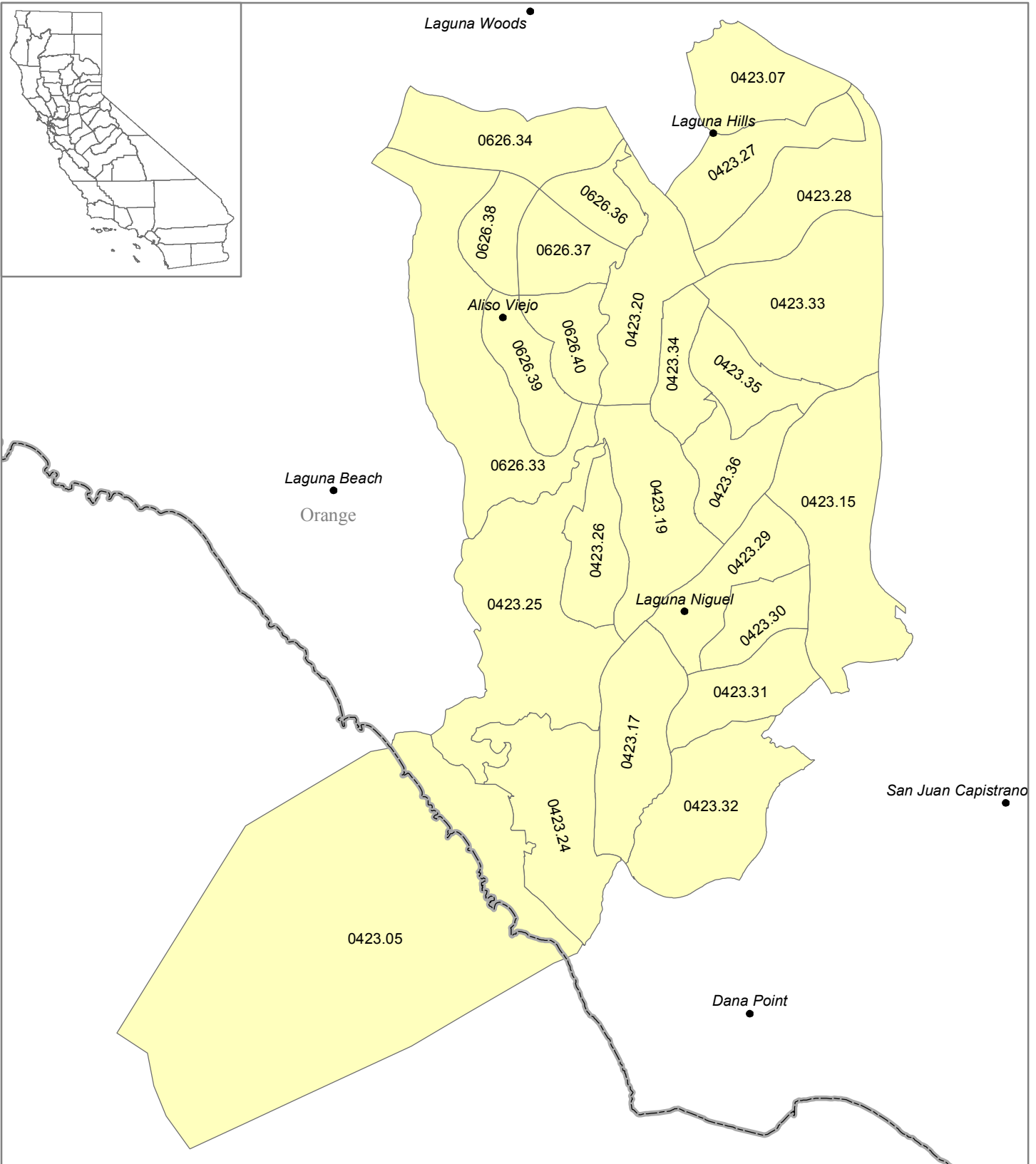


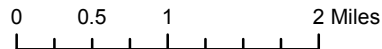
**MSSA 115.2c (Urban)**  
**Aliso Viejo/Laguna Hills/Laguna Niguel**  
**Orange County (FIPS 059)**

Medical Service Study Area



Rational Service Areas (Adopted 2000 Boundaries)

- MSSA Detail (Census Tracts)
- Counties



Map Prepared by:  
 California Office of Statewide Health Planning and Development  
 Healthcare Workforce and Community Development Division  
 Shortage Designation Program

Data Sources:  
 OSHPD  
 2000 U.S. Census