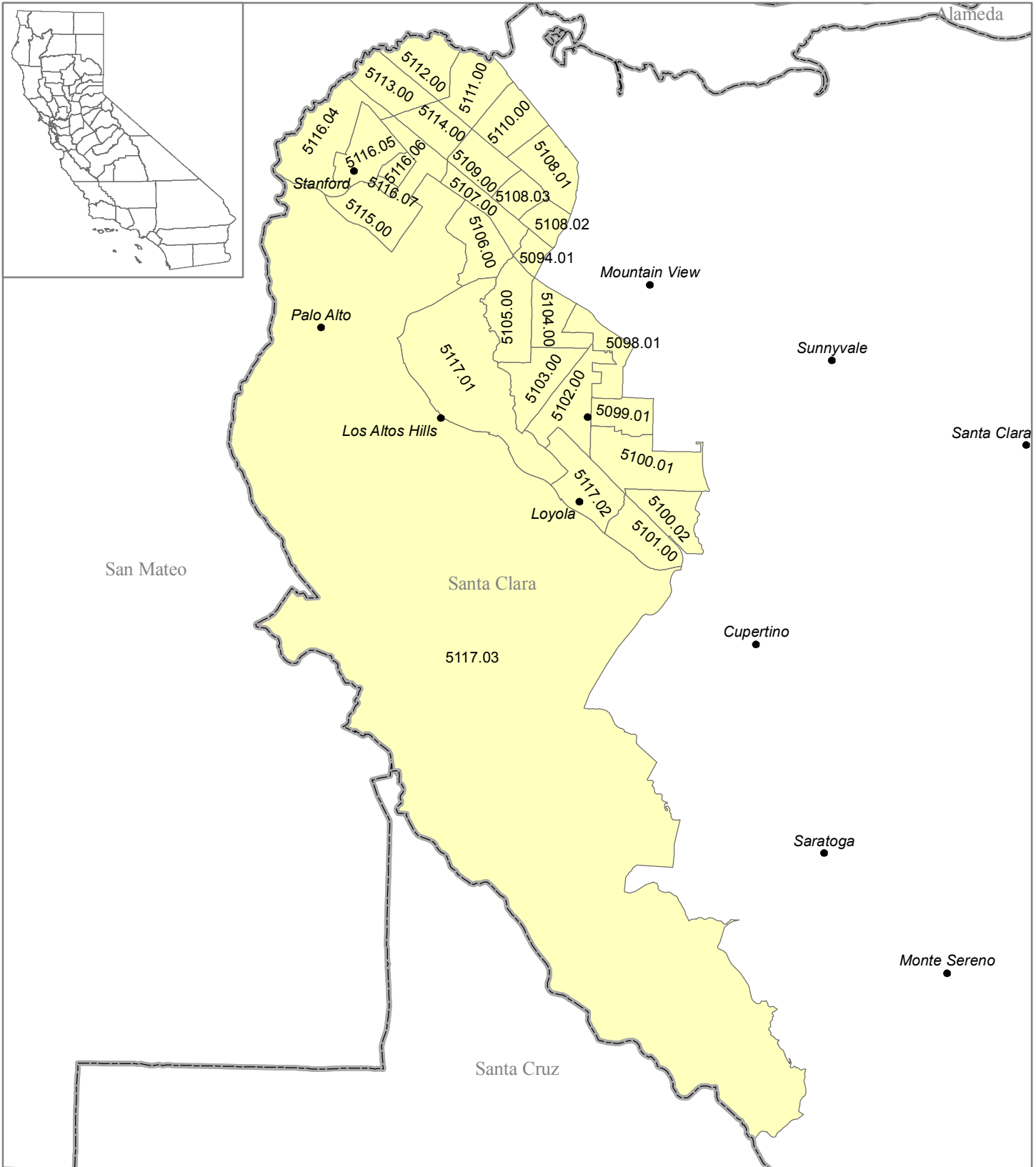


# MSSA 183a (Urban) Los Altos/Los Altos Hills/Palo Alto Central/Stanford Santa Clara County (FIPS 085)

Medical Service Study Area



Rational Service Areas (Adopted 2000 Boundaries)

- MSSA Detail (Census Tracts)
- Counties

0 1 2 4 Miles

Map Prepared by:  
California Office of Statewide Health Planning and Development  
Healthcare Workforce and Community Development Division  
Shortage Designation Program

Data Sources:  
OSHPD  
2000 U.S. Census