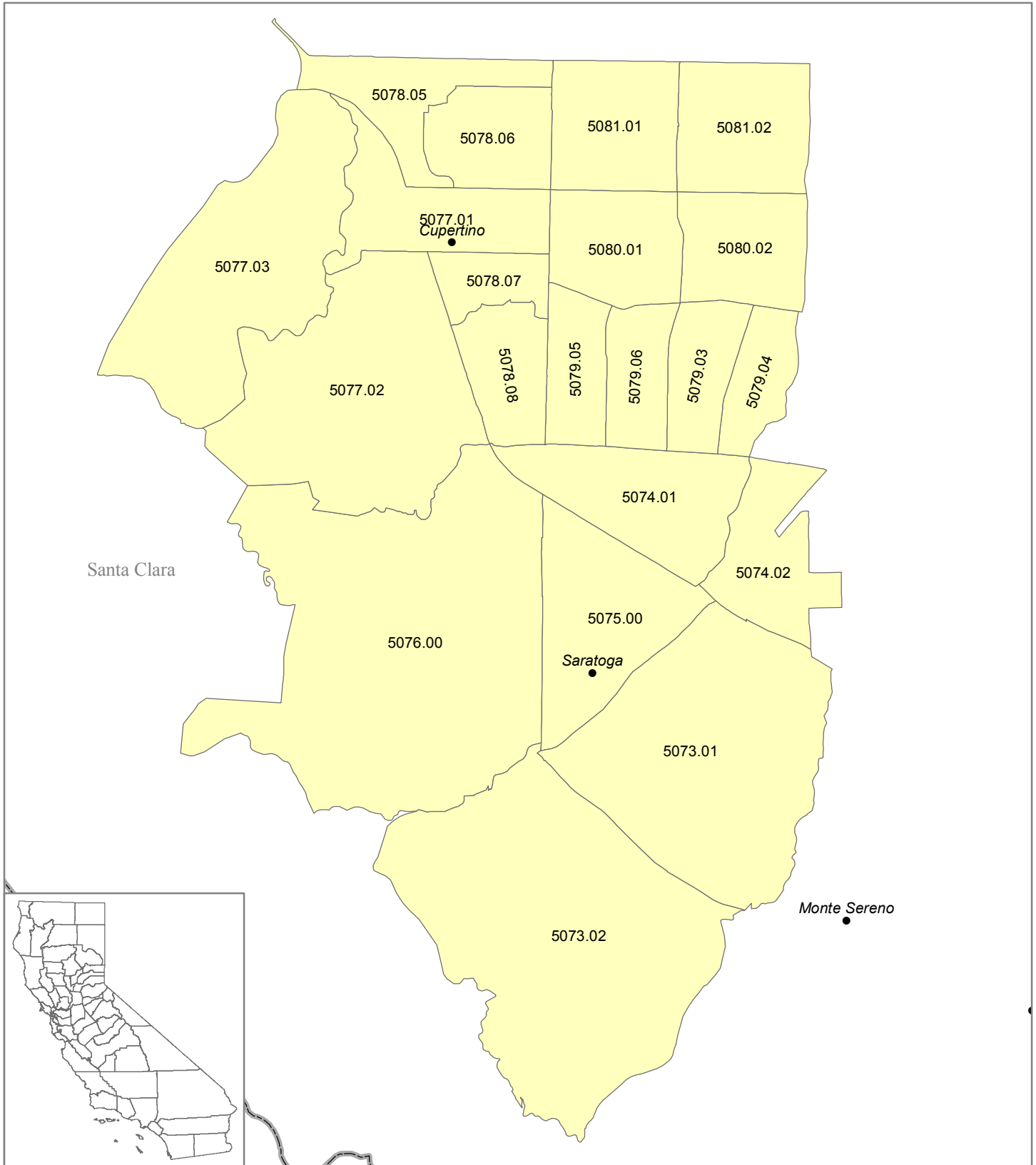


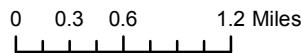
**MSSA 183f (Urban)
Cupertino/Rancho Rinconada/San Jose West/Saratoga
Santa Clara County (FIPS 085)**

Medical Service Study Area



Rational Service Areas (Adopted 2000 Boundaries)

- MSSA Detail (Census Tracts)
- Counties



Map Prepared by:
California Office of Statewide Health Planning and Development
Healthcare Workforce and Community Development Division
Shortage Designation Program

Data Sources:
OSHPD
2000 U.S. Census