



OFFICE OF STATEWIDE HEALTH PLANNING AND DEVELOPMENT
FACILITIES DEVELOPMENT DIVISION

APPLICATION FOR OSHPD PREAPPROVAL
OF MANUFACTURER'S CERTIFICATION (OPM)

OFFICE USE ONLY

APPLICATION #: OPM-0242-13

OSHPD Preapproval of Manufacturer's Certification (OPM)

Type: ☒ New ☐ Renewal ☐ Update to Pre-CBC 2013 OPA Number: _____

Manufacturer Information

Manufacturer: Belimed, Inc.

Manufacturer's Technical Representative: Nelson Garrido

Mailing Address: 2325 Charleston Regional Parkway, Charleston, SC. 29492

Telephone: (843) 216-7424 ext. 372

Email: Nelson.garrido@belimed.us

Product Information

Product Name: CS750 Cart Washer

Product Type: Other Mechanical & Electrical Components

Product Model Number: CS750-L, CS750-M, CS750-S

General Description: Sterilization of Mechanical Instruments

Applicant Information

Applicant Company Name: EASE Co.

Contact Person: Jonathan Roberson, S.E.

Mailing Address: 5877 Pine Ave. Suite 210, Chino Hills, CA. 91709

Telephone: (909) 606-7622

Email: J.Roberson@EASECo.com

I hereby agree to reimburse the Office of Statewide Health Planning and Development review fees in accordance with the California Administrative Code, 2013.

Signature of Applicant: _____

Date: 6/30/15

Title: Principle Engineer

Company Name: EASE Co.

"Access to Safe, Quality Healthcare Environments that Meet California's Diverse and Dynamic Needs"

STATE OF CALIFORNIA – HEALTH AND HUMAN SERVICES AGENCY
OSH-FD-700 (REV 1/24/13)

osHPD

Page 1 of 2



OFFICE OF STATEWIDE HEALTH PLANNING AND DEVELOPMENT FACILITIES DEVELOPMENT DIVISION

Registered Design Professional Preparing Engineering Recommendations

Company

Name: EASE Co.

Name: Jonathan Roberson, S.E.

California License Number: S4197

Mailing Address: 5877 Pine Ave. Suite 210, Chino Hills, CA. 91709

Telephone: 909-606-7667

Email: J.Roberson@EASECo.com

OSHPD Special Seismic Certification Preapproval (OSP)

☐ Special Seismic Certification is preapproved under OSP-
(Separate application for OSP is required)

☒ Special Seismic Certification is not preapproved

Certification Method(s)

☐ Testing in accordance with: ☐ ICC-ES AC156 ☐ FM 1950-10

☐ Other* (Please Specify): _____

*Use of test criteria other than those adopted by the California Building Standards Code, 2013 (CBSC 2013) for component supports and attachments are not permitted. For distribution system, interior partition wall, and suspended ceiling seismic bracings, test criteria other than those adopted in the CBSC 2013 may be used when approved by OSHPD prior to testing.

☒ Analysis

☐ Experience Data

☐ Combination of Testing, Analysis, and/or Experience Data (Please Specify): _____

List of Attachments Supporting the Manufacturer's Certification

☐ Test Report ☒ Drawings ☒ Calculations ☐ Manufacturer's Catalog

☐ Other(s) (Please Specify): _____

OFFICE USE ONLY – OSHPD APPROVAL VALID FOR CBC 2013 ONLY

Signature: William Staehlin Date: 04-18-2016

Print Name: William Staehlin

Title: SSE

Condition of Approval (if applicable): _____

"Access to Safe, Quality Healthcare Environments that Meet California's Diverse and Dynamic Needs"

STATE OF CALIFORNIA – HEALTH AND HUMAN SERVICES AGENCY
OSH-FD-700 (REV 1/24/13)

oshpd

Page 2 of 2



**EQUIPMENT ANCHORAGE
& SEISMIC ENGINEERING**

5877 Pine Ave, Ste. 210
Chino Hills, CA. 91709
Phn: (909) 606-7622

Office of Statewide Health Planning and Development
PREAPPROVAL OF MANUFACTURER'S CERTIFICATION
OPM-0242-13

THIS PREAPPROVAL CONFORMS TO THE 2013 CALIFORNIA BUILDING CODE

MANUFACTURER: **BELIMED, INC.**
EQUIPMENT NAME: **CS750 CART WASHER**

Sheet: 1 of 10

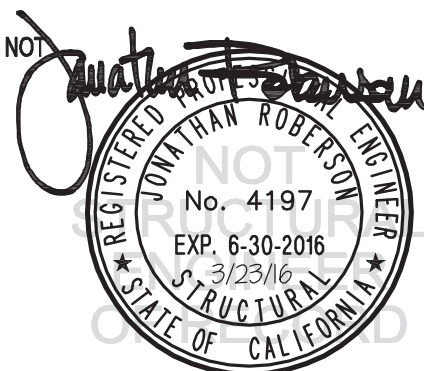
Date: 3/23/16

GENERAL NOTES

1. THIS OSHPD PREAPPROVAL OF MANUFACTURER'S CERTIFICATION (OPM) IS BASED ON THE 2013 CBC. THE DEMANDS
2. (DESIGN FORCES) FOR USE WITH THIS OPM SHALL BE BASED ON THE 2013 CBC
3. THIS DOCUMENT MAY ONLY BE USED WITH THE EXPRESS WRITTEN CONSENT OF THE MANUFACTURER LISTED ABOVE FOR THE SPECIFIC PROJECT SITE AND INSTALLATION LOCATION. THIS DOCUMENT IS INVALID WITHOUT SUCH CONSENT.
4. THIS PREAPPROVAL CONFORMS TO THE 2013 CALIFORNIA BUILDING CODE WHERE S_{ds} IS NOT GREATER THAN 1.55, 1.90 & 2.20. SEE DETAIL FOR APPLICABILITY
4. FORCES PER ASCE 7-10 SECTION 13.3.1, EQUATIONS 13.3-1, 13.3-2 & 13.3-3,
WHERE $S_{ds} = 1.55$, $a_p = 1.0$, $I_p = 1.5$, $R_p = 1.5$, $z/h = 0$ AT CONCRETE SLAB. SEE FOLLOWING SHEETS FOR Ω_e ,
WHERE $S_{ds} = 1.90$, $a_p = 1.0$, $I_p = 1.5$, $R_p = 1.5$, $z/h = 0$ AT CONCRETE SLAB. SEE FOLLOWING SHEETS FOR Ω_e ,
WHERE $S_{ds} = 2.20$, $a_p = 1.0$, $I_p = 1.5$, $R_p = 1.5$, $z/h = z/h \leq 1$ AT CONCRETE SLAB ON METAL DECK.
SEE FOLLOWING SHEETS FOR Ω_e
5. THIS PREAPPROVAL COVERS ONLY THE SUPPORTS AND ATTACHMENTS OF THE EQUIPMENT TO THE STRUCTURE.
6. ALL DESIGN FORCES SHOWN ON THE DRAWINGS ARE FACTORED LOADS THAT SHALL BE USED FOR STRENGTH DESIGN.
7. CONCRETE SLAB ON METAL DECK DETAIL VALID FOR DEMANDS SHOWN AT ANY ELEVATION IN THE BUILDING. (i.e. $z/h \leq 1$)
WHERE $S_{ds} \leq "X"$
8. CONCRETE SLAB ON GRADE DETAIL VALID FOR DEMANDS SHOWN AT ANY ELEVATION BELOW GRADE. (i.e. $z/h \leq 0$)
WHERE $S_{ds} \leq "X"$
9. "X" = SEE DETAIL FOR MAGNITUDE OF S_{ds}

10. RESPONSIBILITIES OF THE STRUCTURAL ENGINEER OF RECORD OF THE BUILDING

- A. PROVIDE SUPPORTING STRUCTURE TO SUPPORT WEIGHTS AND FORCES SHOWN IN ADDITION TO ALL OTHER LOADS.
- B. VERIFY THAT THE INSTALLATION IS IN CONFORMANCE WITH THE 2013 CBC AND WITH THE DETAILS, MATERIAL AND GAGE OF THE UNIT WHERE ATTACHMENTS ARE MADE AGREE WITH THE INFORMATION SHOWN ON THE PREAPPROVAL DOCUMENTS.
- C. VERIFY THAT PROJECT SPECIFIC VALUES OF S_{ds} & z/h RESULT IN SEISMIC FORCES (E_h , E_v) THAT DO NOT EXCEED THE VALUES ON THE DETAILS.
- D. VERIFY THAT THE CONCRETE SLAB TO WHICH THE EQUIPMENT IS ANCHORED MEETS THE REQUIREMENTS OF THE APPLICABLE ICC ESR.
- E. VERIFY THAT THE ANCHORS ARE AN ADEQUATE DISTANCE FROM ANY SLAB EDGES OR OPENINGS (SEE TYPICAL DETAIL ON SHEET 2).
- F. VERIFY THAT ALL NEW OR EXISTING ANCHORS ARE AN ADEQUATE DISTANCE FROM THE UNIT ATTACHMENTS AND CHECK FOR INTERACTION WHERE OTHER ANCHORS ARE WITHIN 18" OR $6h_{ef}$ FROM THIS UNIT'S ANCHORS.



BELIMED, INC.

CS750 CART WASHER

DES. J. ROBERSON

JOB NO. 11-1425

DATE 3/23/16

SHEET

2

OF 10 SHEETS

11. EXPANSION ANCHORS:

A. ATTACHMENT IS TO BE MADE WITH THE ANCHORS LISTED BELOW AND INSTALLED AS DESCRIBED IN THE CORRESPONDING ICC REPORT.

Anchor Diameter	Concrete Type	Min. f_c (psi)	Anchor Type	ICC Report No.	Min. Embed.	Min. Spacing	Min. Edge Dist.	Min. Conc. Thickness	Torque Test	Direct Tension
1/2"	Sand Light Weight	3000	Hilti Kwik Bolt TZ	ESR-1917	3-1/4"	—	—	See Sheet 10 of 10	40 FT-LB	2129 lb
1/2"	Normal Weight	3000	Hilti Kwik Bolt TZ	ESR-1917	3-1/4"	10"	24"	6"	40 FT-LB	3282 lb
3/4"	Normal Weight	3000	Hilti Kwik Bolt TZ	ESR-1917	3-3/4"	12"	27"	6"	110 FT-LB	4120 lb
3/4"	Normal Weight	3000	Hilti Kwik Bolt TZ	ESR-1917	4-3/4"	15"	24"	8"	110 FT-LB	5874 lb

B. THIS PREAPPROVAL ALLOWS FOR UP TO A MAXIMUM OF 2 ADJACENT CONCRETE SLAB EDGES, 24" OR 27" (SEE SCHEDULE) AWAY MINIMUM (i.e. - CORNER). SEE ADJACENT DETAIL FOR ADDITIONAL MINIMUM ALLOWABLE CONCRETE EDGE DISTANCES.

C. TESTING OF EXPANSION ANCHORS PER 2013 CBC, 1913A.7: TESTING SHALL BE DONE IN THE PRESENCE OF THE SPECIAL INSPECTOR AND A REPORT OF THE TEST RESULTS SHALL BE SUBMITTED TO OSHPD

(i) AFTER AT LEAST 24 HOURS HAVE ELAPSED SINCE INSTALLATION, DIRECT PULL TENSION TEST OR TORQUE TEST AT LEAST 50% OF THE ANCHORS.

(ii) ACCEPTANCE CRITERIA:

- DIRECT TENSION TEST: THE ANCHOR SHOULD HAVE NO OBSERVABLE MOVEMENT AT THE TEST LOAD. A PRACTICAL WAY TO DETERMINE OBSERVABLE MOVEMENT IS THAT THE WASHER BECOMES LOOSE.
- TORQUE TEST: THE APPLICABLE TORQUE MUST BE ACHIEVED WITHIN THE FOLLOWING LIMITS: WEDGE TYPE : 1/2 TURN OF THE NUT

(iii) IF ANY ANCHOR FAILS, TEST ALL ANCHORS.

D. AVOID DAMAGING EXISTING STEEL REINFORCING IN CONCRETE SLAB WHEN INSTALLING CONCRETE EXPANSION ANCHORS.

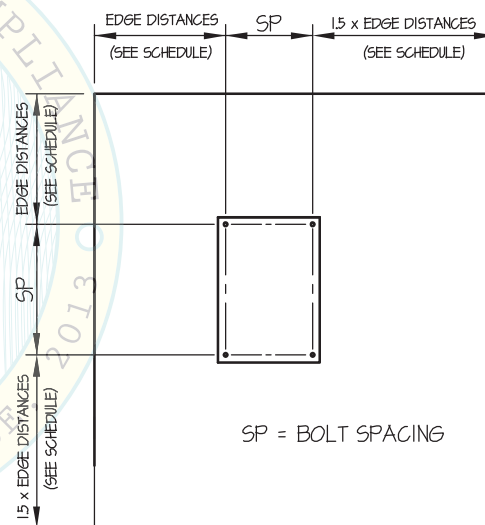
E. PROVIDE FOR FULL THREAD ENGAGEMENT OF NUT & WASHER.

12. BOLTS THROUGH CONCRETE ON METAL DECK

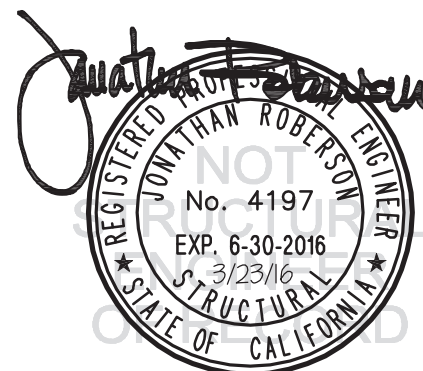
A. BOLTS SHALL BE TORQUED BY 3/4 TURN OF THE NUTS AFTER THE SNUG TIGHT (THE SNUG-TIGHT CONDITION IS DEFINED AS THE TIGHTNESS REQUIRED TO BRING THE CONNECTED PLIES INTO FIRM CONTACT) CONDITION IS ACHIEVED, UNLESS OTHERWISE NOTED.

B. THROUGH BOLT HOLES SHALL BE 1/16" LARGER THAN BOLT SIZE (HOLE SIZE = BOLT SIZE + 1/16") FOR CONCRETE.

C. THROUGH-BOLTS IN CONCRETE SHALL RECEIVE SPECIAL INSPECTION AND TESTING (THROUGH BOLTS WITH STEEL TO STEEL CONNECTION IN TENSION DO NOT REQUIRE TENSION TESTING) IN ACCORDANCE WITH REQUIREMENTS FOR POST-INSTALLED ANCHORS.



TYPICAL CONCRETE EDGE DETAIL



BELIMED, INC.

DES. J. ROBERSON

SHEET

3

JOB NO. 11-1425

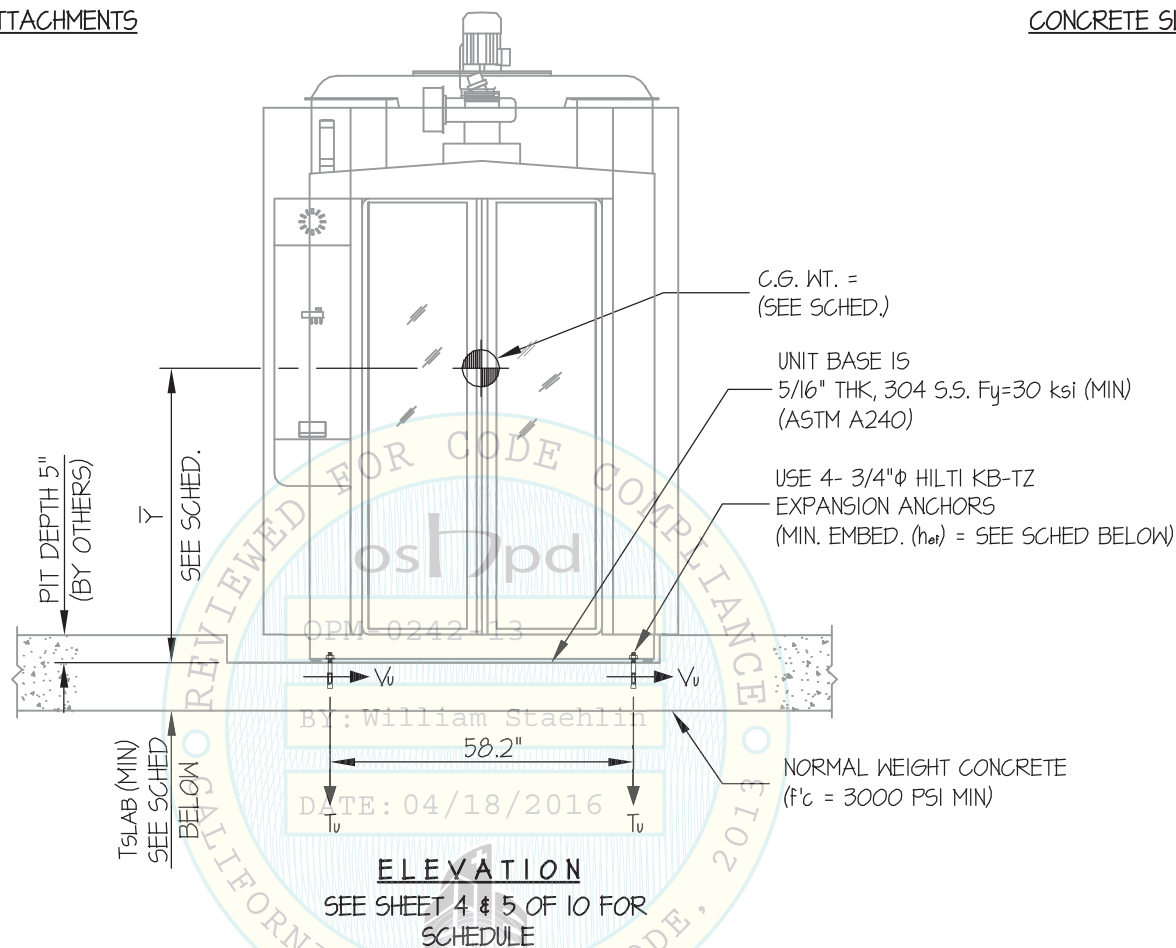
CS750 CART WASHER

DATE 3/23/16

OF 10 SHEETS

SEISMIC SUPPORTS & ATTACHMENTS

CONCRETE SLAB

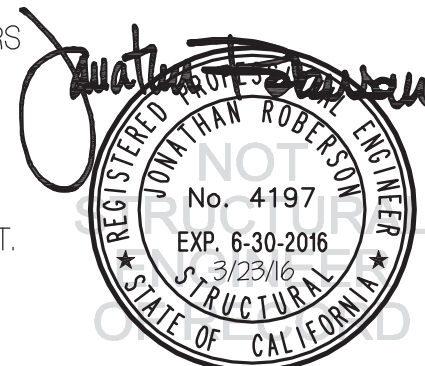


ANCHORS

MAX Sds	TYPE	DIAM	EFF EMBED	QTY	TS LAB
155	HILTI KB-TZ	3/4"	3.75"	4	6"
190	HILTI KB-TZ	3/4"	4.75"	4	8"

NOTES:

- FORCES ARE DETERMINED PER 2013 CALIFORNIA BUILDING CODE AND ASCE 7-10 STRENGTH DESIGN IS USED. ($a_p = 10$, $l_p = 15$, $R_p = 15$, $\Omega_o = 15$, $z/h = 0$)
- CENTER OF GRAVITY (C.G.) AND WEIGHT ARE THE GOVERNING PARAMETERS FOR DESIGN. THIS PREAPPROVAL ENCOMPASSES ALL WEIGHTS UP TO THE MAXIMUM WEIGHT SHOWN.
- STRUCTURAL ENGINEER OF RECORD FOR THE BUILDING SHALL PROVIDE SUPPORT STRUCTURE DESIGNED TO SUPPORT WEIGHTS AND FORCES SHOWN IN COMBINATION WITH ALL OTHER LOADS THAT MAY BE PRESENT.



BELIMED, INC.

CS750 CART WASHER

DES. **J. ROBERSON**

JOB NO. **11-1425**

DATE **3/23/16**

SHEET

4

OF **10** SHEETS

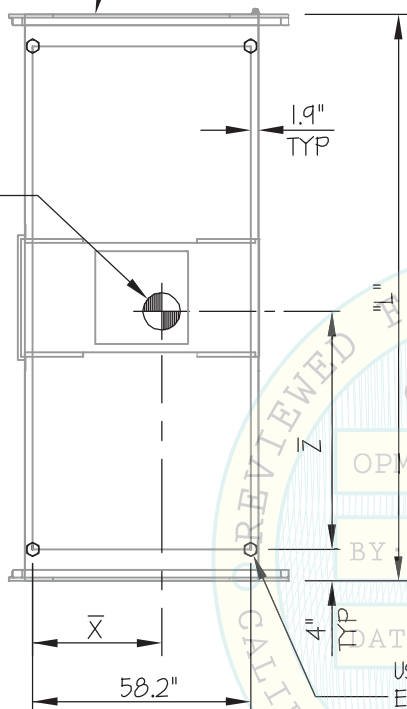
SEISMIC SUPPORTS & ATTACHMENTS

MAX $S_{ps} \leq 1.55$

CONCRETE SLAB

UNIT BASE IS
5/16" THK, 304 S.S. $F_y = 30$ ksi (MIN)
(ASTM A240)

C.G. WT. =
(SEE SCHED.)
(\bar{Y} = SEE SCHED.)



MODEL	WEIGHT (LB)	DIMENSIONS (INCHES)				BOLT FORCES	
		"L"	\bar{X}	\bar{Z}	\bar{Y}	* T_u (LB)	* V_u (LB)
CS750-L	6700	151.6	33.4	63.1	53.5	3016	2019
CS750-M	5800	126	34.2	56.8	55.3	2622	1789
CS750-S	5400	88.6	32.6	40.9	59.8	2800	1588

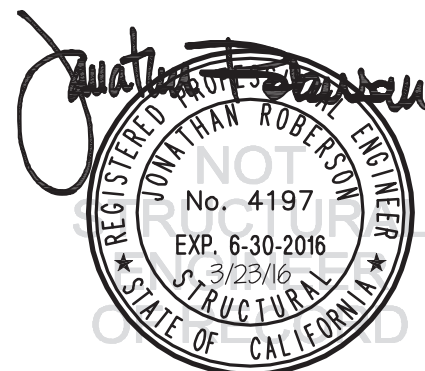
* VALUES INCLUDE Ω_0

BY William Staehlin

DATE: 04/18/2016

USE 4- 3/4" ϕ HILTI KB-TZ
EXPANSION ANCHORS
(MIN. EMBED. (h_{dev}) = 3.75")

PLAN AT BASE



BELIMED, INC.

CS750 CART WASHER

DES. **J. ROBERSON**

JOB NO. **11-1425**

DATE **3/23/16**

SHEET

5

OF **10** SHEETS

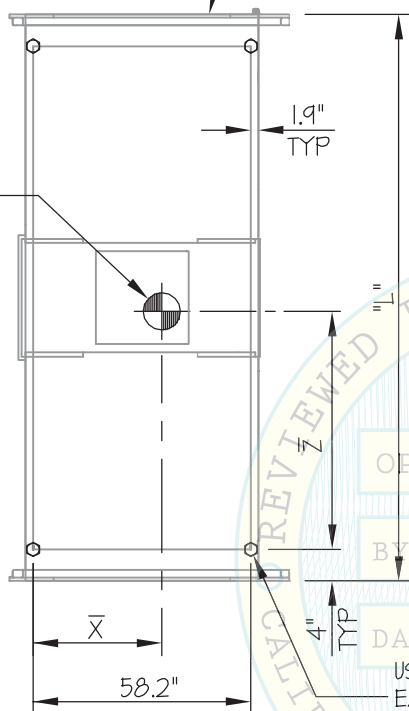
SEISMIC SUPPORTS & ATTACHMENTS

$1.55 < \text{MAX } S_{DS} \leq 1.90$

CONCRETE SLAB

UNIT BASE IS
5/16" THK, 304 S.S. $F_y=30$ ksi (MIN)
(ASTM A240)

C.G. WT. =
(SEE SCHED.)
(\bar{Y} = SEE SCHED)



PLAN AT BASE

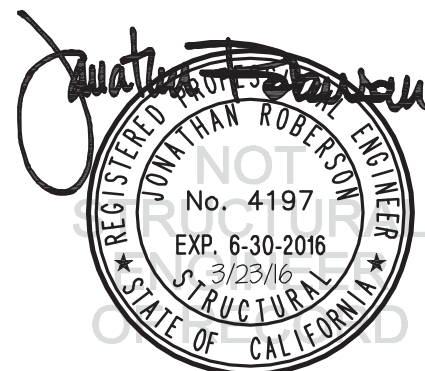
MODEL	WEIGHT (LB)	DIMENSIONS (INCHES)				BOLT FORCES	
		"L"	\bar{X}	\bar{Z}	\bar{Y}	* T_U (LB)	* V_U (LB)
CS750-L	6700	151.6	33.4	63.1	53.5	3996	2461
CS750-M	5800	126	34.2	56.8	55.3	3444	2181
CS750-S	5400	88.6	32.6	40.9	59.8	3667	1936

* VALUES INCLUDE Ω_o

BY: William Staehlin

DATE: 04/18/2016

USE 4- 3/4" Φ HILTI KB-TZ
EXPANSION ANCHORS
(MIN. EMBED. (h_{ef}) = 4.75")



BELIMED, INC.

CS750 CART WASHER

DES. **J. ROBERSON**

JOB NO. **11-1425**

DATE **3/23/16**

SHEET

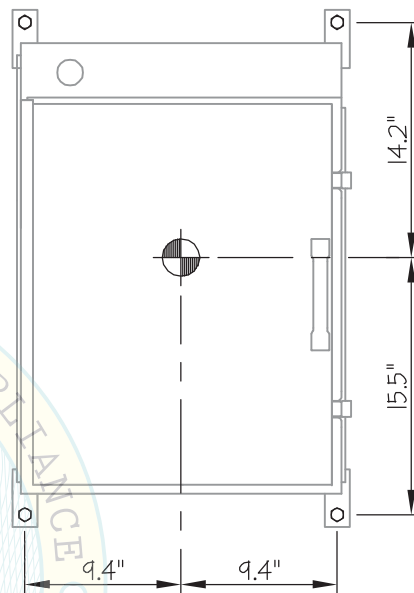
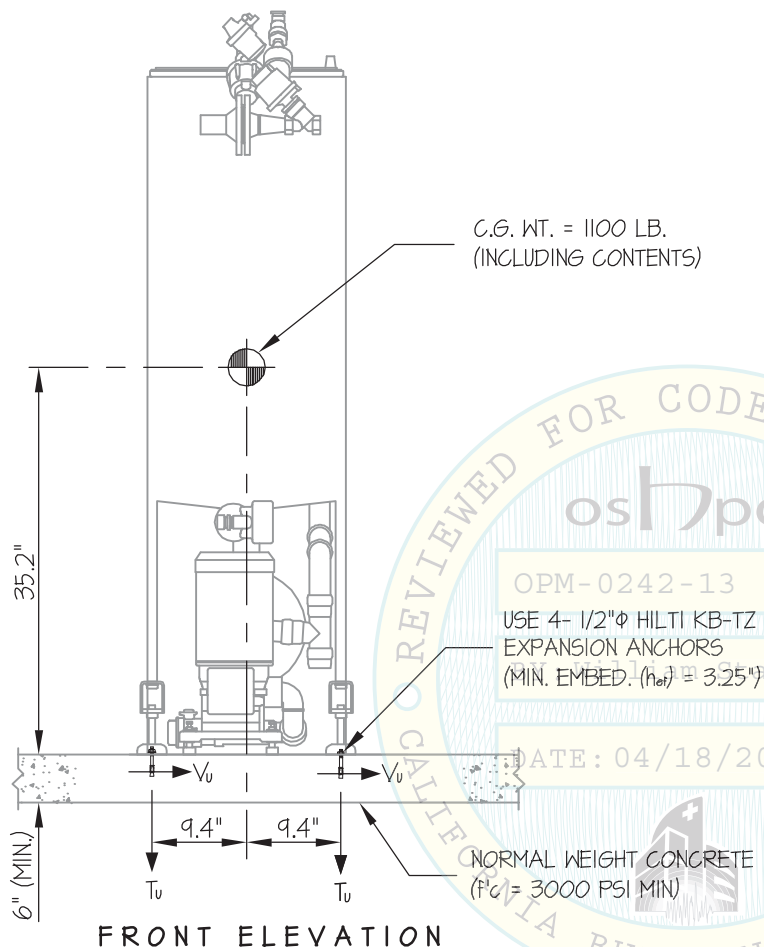
6

OF **10** SHEETS

SEISMIC SUPPORTS & ATTACHMENTS

MAX $S_{DS} \leq 1.90$

CONCRETE SLAB



PLAN AT BASE

T_u = 1477 LB/BOLT (MAX)
 V_u = 367 LB/BOLT (MAX)
(VALUES INCLUDE Ω_u)

NOTES:

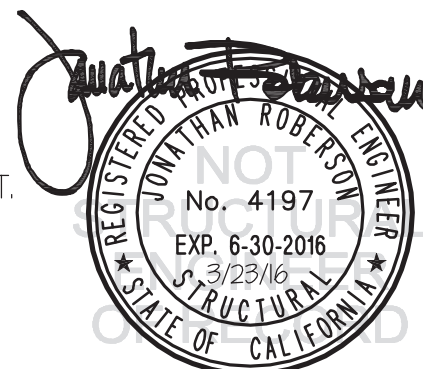
- FORCES ARE DETERMINED PER 2013 CALIFORNIA BUILDING CODE AND ASCE 7-10. STRENGTH DESIGN IS USED. (S_{DS} = 1.90, a_p = 1.0, I_p = 1.5, R_p = 1.5, Ω_u = 1.5, z/h = 0)

HORIZONTAL FORCE (E_h) = 2.64 W_p

HORIZONTAL FORCE (E_h) = 3.96 W_p (FOR CONCRETE ANCHORAGE)

VERTICAL FORCE (E_v) = 0.44 W_p

- CENTER OF GRAVITY (C.G.) AND WEIGHT ARE THE GOVERNING PARAMETERS FOR DESIGN. THIS PREAPPROVAL ENCOMPASSES ALL WEIGHTS UP TO THE MAXIMUM WEIGHT SHOWN.
- STRUCTURAL ENGINEER OF RECORD FOR THE BUILDING SHALL PROVIDE SUPPORT STRUCTURE DESIGNED TO SUPPORT WEIGHTS AND FORCES SHOWN IN COMBINATION WITH ALL OTHER LOADS THAT MAY BE PRESENT.



BELIMED, INC.

CS750 CART WASHER

DES. **J. ROBERSON**

JOB NO. **11-1425**

DATE **3/23/16**

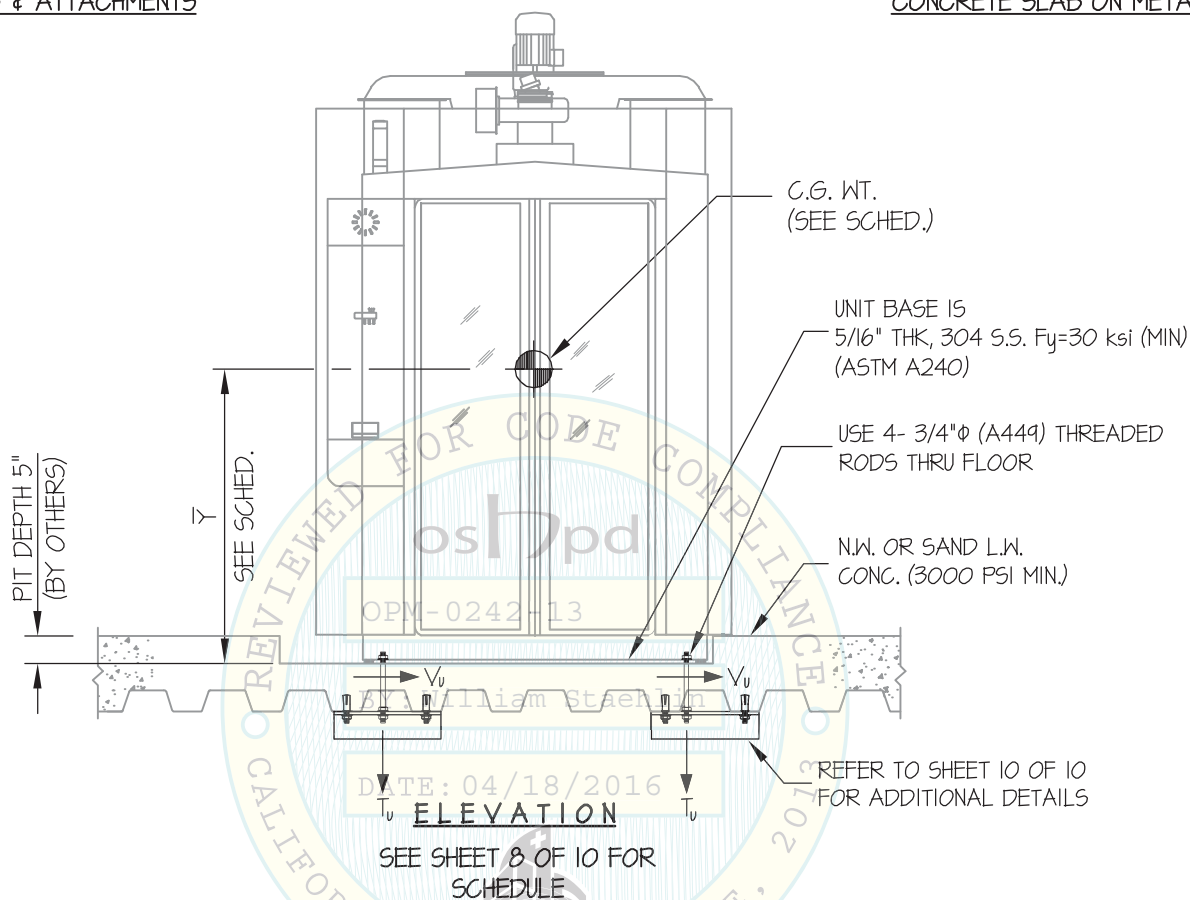
SHEET

7

OF **10** SHEETS

SEISMIC SUPPORTS & ATTACHMENTS

CONCRETE SLAB ON METAL DECK



NOTES:

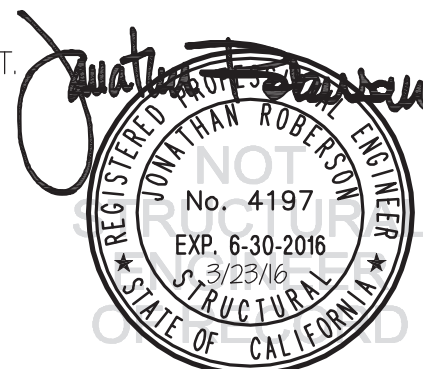
- FORCES ARE DETERMINED PER 2013 CALIFORNIA BUILDING CODE AND ASCE 7-10. STRENGTH DESIGN IS USED. ($S_{DS} = 2.20$, $a_p = 1.0$, $p = 1.5$, $R_p = 1.5$, $\Omega_0 = 1.5$, $z/h \leq 1$)

HORIZONTAL FORCE (E_h) = $2.64 W_p$

HORIZONTAL FORCE (E_h) = $3.96 W_p$ (FOR CONCRETE ANCHORAGE)

VERTICAL FORCE (E_v) = $0.44 W_p$

- CENTER OF GRAVITY (C.G.) AND WEIGHT ARE THE GOVERNING PARAMETERS FOR DESIGN. THIS PREAPPROVAL ENCOMPASSES ALL WEIGHTS UP TO THE MAXIMUM WEIGHT SHOWN.
- STRUCTURAL ENGINEER OF RECORD FOR THE BUILDING SHALL PROVIDE SUPPORT STRUCTURE DESIGNED TO SUPPORT WEIGHTS AND FORCES SHOWN IN COMBINATION WITH ALL OTHER LOADS THAT MAY BE PRESENT.



BELIMED, INC.

DES. J. ROBERSON

SHEET

8

CS750 CART WASHER

JOB NO. 11-1425

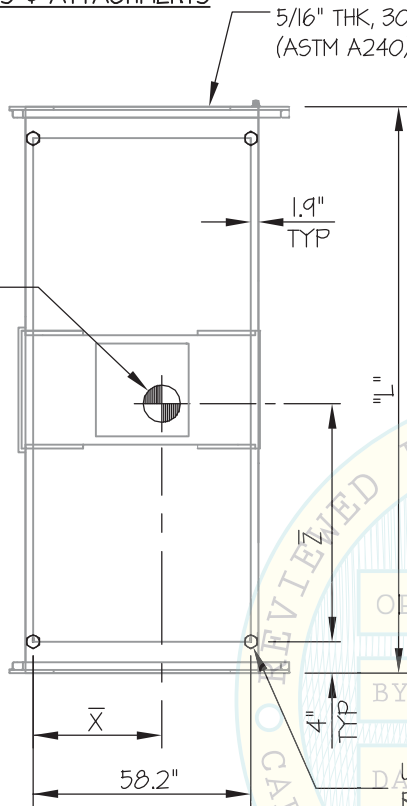
DATE 3/23/16

OF 10 SHEETS

SEISMIC SUPPORTS & ATTACHMENTS

UNIT BASE IS
5/16" THK, 304 S.S. $F_y=30$ ksi (MIN)
(ASTM A240)

CONCRETE SLAB ON METAL DECK

C.G. WT. =
(SEE SCHED.)
(\bar{Y} = SEE SCHED.)

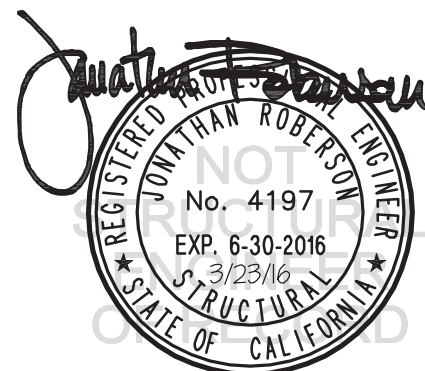
PLAN AT BASE

MODEL	WEIGHT (LB)	DIMENSIONS (INCHES)				BOLT FORCES	
		"L"	\bar{X}	\bar{Z}	\bar{Y}	* T_U (LB)	* V_U (LB)
CS750-L	6700	151.6	33.4	63.1	53.5	9258	5075
CS750-M	5800	126	34.2	56.8	55.3	7998	4499
CS750-S	5400	88.8	32.6	40.9	59.8	4492	3993

* VALUES DO NOT INCLUDE Ω_o

OPM-0242-13

BY: William Staehlin

USE 4- 3/4" ϕ (A449) THREADED
RODS THRU FLOOR

BELIMED, INC.

CS750 CART WASHER

DES. **J. ROBERSON**

JOB NO. **11-1425**

DATE **3/23/16**

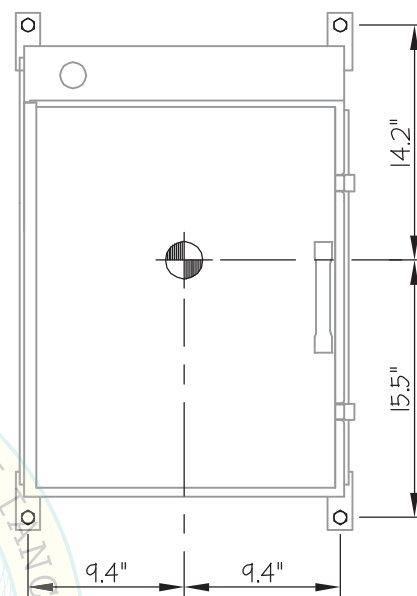
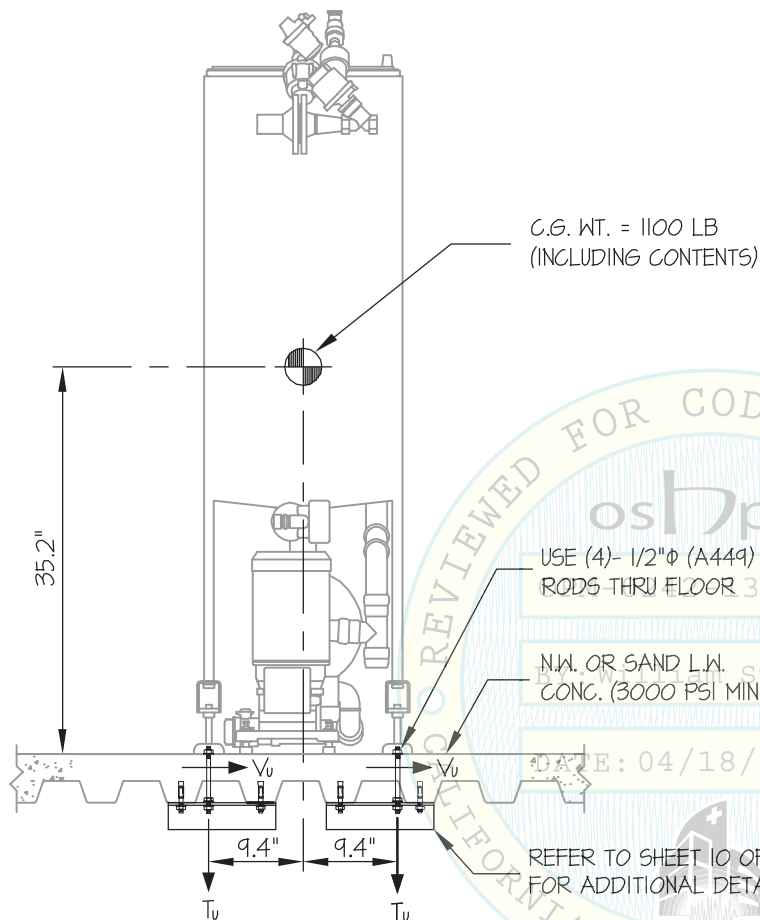
SHEET

9

OF **10** SHEETS

SEISMIC SUPPORTS & ATTACHMENTS

CONCRETE SLAB ON METAL DECK



PLAN AT BASE

T_u = 3222 LB/BOLT (MAX)
 V_u = 758 LB/BOLT (MAX)
(VALUES DO NOT INCLUDE Ω_o)

FRONT ELEVATION

NOTES:

- FORCES ARE DETERMINED PER 2013 CALIFORNIA BUILDING CODE AND ASCE 7-10. STRENGTH DESIGN IS USED. ($S_{Ds} = 2.20$, $a_p = 1.0$, $I_p = 1.5$, $R_p = 1.5$, $\Omega_o = 1.5$, $z/h \leq 1$)

HORIZONTAL FORCE (E_h) = $2.64 W_p$

HORIZONTAL FORCE (E_h) = $3.96 W_p$ (FOR CONCRETE ANCHORAGE)

VERTICAL FORCE (E_v) = $0.44 W_p$

- CENTER OF GRAVITY (C.G.) AND WEIGHT ARE THE GOVERNING PARAMETERS FOR DESIGN. THIS PREAPPROVAL ENCOMPASSES ALL WEIGHTS UP TO THE MAXIMUM WEIGHT SHOWN.
- STRUCTURAL ENGINEER OF RECORD FOR THE BUILDING SHALL PROVIDE SUPPORT STRUCTURE DESIGNED TO SUPPORT WEIGHTS AND FORCES SHOWN IN COMBINATION WITH ALL OTHER LOADS THAT MAY BE PRESENT.



BELIMED, INC.

CS750 CART WASHER

DES. **J. ROBERSON**

JOB NO. **11-1425**

DATE **3/23/16**

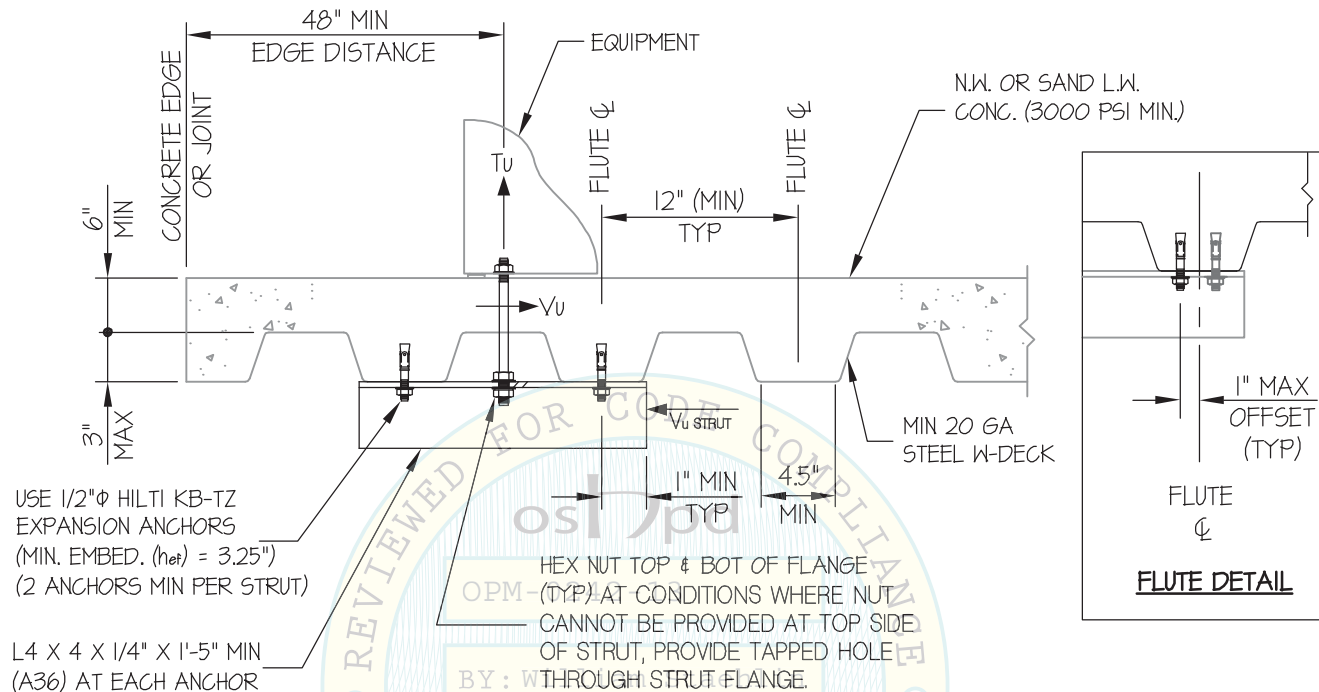
SHEET

10

OF **10** SHEETS

SEISMIC SUPPORTS & ATTACHMENTS

CONCRETE DETAILS



MIN STEEL DECK REQUIREMENTS AND STRUT DETAIL

DATE: 04/18/2016

