



OFFICE OF STATEWIDE HEALTH PLANNING AND DEVELOPMENT  
FACILITIES DEVELOPMENT DIVISION

APPLICATION FOR OSHPD PREAPPROVAL  
OF MANUFACTURER'S CERTIFICATION (OPM)

OFFICE USE ONLY

APPLICATION #: OPM-0338-13

OSHPD Preapproval of Manufacturer's Certification (OPM)

Type: ☒ New ☐ Renewal ☐ Update to Pre-CBC 2013 OPA Number: \_\_\_\_\_

Manufacturer Information

Manufacturer: ADVANCED STERILIZATION PRODUCTS

Manufacturer's Technical Representative: Curtis Felt

Mailing Address: 33 Technology Drive, Irvine, CA. 92618

Telephone: On File Email: On File

Product Information

Product Name: STERRAD 100NX Sterilizer

Product Type: Other Mechanical and Electrical Components

Product Model Number: STERRAD 100NX

General Description: Low temperature sterilizer for medical instruments

Applicant Information

Applicant Company Name: EASE Co.

Contact Person: Jonathan Roberson, S.E.

Mailing Address: 5877 Pine Ave. Suite 210, Chino Hills, CA. 91709

Telephone: (909) 606-7622 Email: J.Roberson@EASECo.com

I hereby agree to reimburse the Office of Statewide Health Planning and Development review fees in accordance with the California Administrative Code, 2016.

Signature of Applicant: \_\_\_\_\_

Date: 04/18/16

Title: Principal Engineer Company Name: EASE Co.

"Access to Safe, Quality Healthcare Environments that Meet California's Diverse and Dynamic Needs"



## OFFICE OF STATEWIDE HEALTH PLANNING AND DEVELOPMENT FACILITIES DEVELOPMENT DIVISION

### Registered Design Professional Preparing Engineering Recommendations

Company Name: EASE Co.

Name: Jonathan Roberson, S.E. California License Number: S4197

Mailing Address: 5877 Pine Ave. Suite 210, Chino Hills, CA. 91709

Telephone: 909-606-7622 Email: J.Roberson@EASECo.com

### OSHPD Special Seismic Certification Preapproval (OSP)

- ☐ Special Seismic Certification is preapproved under OSP-  
(Separate application for OSP is required)
- ☒ Special Seismic Certification is not preapproved

### Certification Method(s)

- ☐ Testing in accordance with: ☐ ICC-ES AC156 ☐ FM 1950-16
- ☐ Other\* (Please Specify): \_\_\_\_\_

\*Use of criteria other than those adopted by the California Building Standards Code, 2016 (CBSC 2016) for component supports and attachments are not permitted. For distribution system, interior partition wall, and suspended ceiling seismic bracings, test criteria other than those adopted in the CBSC 2016 may be used when approved by OSHPD prior to testing.

- ☒ Analysis
- ☐ Experience Data
- ☐ Combination of Testing, Analysis, and/or Experience Data (Please Specify): \_\_\_\_\_

### List of Attachments Supporting the Manufacturer's Certification

- ☐ Test Report ☒ Drawings ☒ Calculations ☐ Manufacturer's Catalog
- ☐ Other(s) (Please Specify): \_\_\_\_\_

### OFFICE USE ONLY – OSHPD APPROVAL VALID FOR CBC 2016 & ALL PRE-2016 CODE BASED PROJECTS

Signature: William Staehlin Date: 09-11-2017

Print Name: William Staehlin

Title: SSE

Condition of Approval (if applicable): \_\_\_\_\_

"Access to Safe, Quality Healthcare Environments that Meet California's Diverse and Dynamic Needs"





**EQUIPMENT ANCHORAGE  
& SEISMIC ENGINEERING**

5877 Pine Ave, Ste. 210  
Chino Hills, CA. 91709  
Phn: (909) 606-7622

Office of Statewide Health Planning and Development

**PREAPPROVAL OF MANUFACTURER'S CERTIFICATION**

**OPM-0338-13**

**THIS PREAPPROVAL CONFORMS TO THE 2016 CALIFORNIA BUILDING CODE**

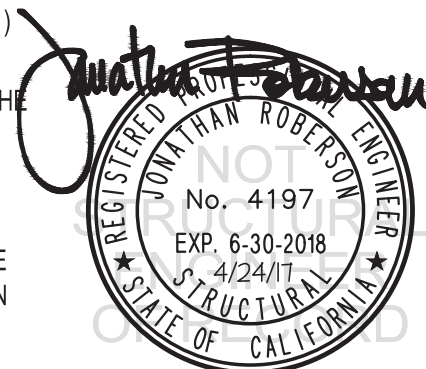
MANUFACTURER: **ADVANCED STERILIZATION PRODUCTS**  
EQUIPMENT NAME: **STERRAD 100NX STERILIZER**

Sheet: 1 of 11

Date: 4/24/17

**GENERAL NOTES**

1. THIS OSHPD PREAPPROVAL OF MANUFACTURER'S CERTIFICATION (OPM) IS BASED ON THE 2016 CBC. THE DEMANDS (DESIGN FORCES) FOR USE WITH THIS OPM SHALL BE BASED ON THE 2016 CBC
2. THIS DOCUMENT MAY ONLY BE USED WITH THE EXPRESS WRITTEN CONSENT OF THE MANUFACTURER LISTED ABOVE FOR THE SPECIFIC PROJECT SITE AND INSTALLATION LOCATION. THIS DOCUMENT IS INVALID WITHOUT SUCH CONSENT.
3. THIS PREAPPROVAL CONFORMS TO THE 2016 CALIFORNIA BUILDING CODE WHERE  $S_{ds}$  IS NOT GREATER THAN 1.25 & 2.00 SEE DETAIL FOR APPLICABILITY
4. FORCES PER ASCE 7-10 SECTION 13.3.1, EQUATIONS 13.3-1, 13.3-2 & 13.3-3,  
WHERE  $S_{ds} = 1.10$ ,  $a_p = 1.0$ ,  $I_p = 1.5$ ,  $R_p = 1.5$ ,  $z/h \leq 1$  AT CONCRETE SLAB ON METAL DECK. SEE FOLLOWING SHEETS FOR  $\Omega_o$ .  
WHERE  $S_{ds} = 1.80$ ,  $a_p = 1.0$ ,  $I_p = 1.5$ ,  $R_p = 1.5$ ,  $z/h = 0$  AT CONCRETE SLAB. SEE FOLLOWING SHEETS FOR  $\Omega_o$ .  
WHERE  $S_{ds} = 2.20$ ,  $a_p = 1.0$ ,  $I_p = 1.5$ ,  $R_p = 1.5$ ,  $z/h = 0$  AT CONCRETE SLAB,  $z/h \leq 1$  AT CONCRETE SLAB ON METAL DECK  
SEE FOLLOWING SHEETS FOR  $\Omega_o$ .
5. THIS PREAPPROVAL COVERS ONLY THE SUPPORTS AND ATTACHMENTS OF THE EQUIPMENT TO THE STRUCTURE.
6. ALL DESIGN FORCES SHOWN ON THE DRAWINGS ARE FACTORED LOADS THAT SHALL BE USED FOR STRENGTH DESIGN.
7. CONCRETE SLAB ON METAL DECK DETAIL VALID FOR DEMANDS SHOWN AT ANY ELEVATION IN THE BUILDING. (i.e.  $z/h \leq 1$ )
8. CONCRETE SLAB ON GRADE DETAIL VALID FOR DEMANDS SHOWN AT ELEVATION AT OR BELOW GRADE. (i.e.  $z/h = 0$ )
9. **RESPONSIBILITIES OF THE STRUCTURAL ENGINEER OF RECORD OF THE BUILDING**
  - A. PROVIDE SUPPORTING STRUCTURE TO SUPPORT WEIGHTS AND FORCES SHOWN IN ADDITION TO ALL OTHER LOADS.
  - B. VERIFY THAT THE INSTALLATION IS IN CONFORMANCE WITH THE 2016 CBC AND WITH THE DETAILS, MATERIAL AND GAGE OF THE UNIT WHERE ATTACHMENTS ARE MADE AGREE WITH THE INFORMATION SHOWN ON THE PREAPPROVAL DOCUMENTS.
  - C. VERIFY THAT PROJECT SPECIFIC VALUES OF  $S_{ds}$  &  $z/h$  RESULT IN SEISMIC FORCES ( $E_h$ ,  $E_v$ ) THAT DO NOT EXCEED THE VALUES ON THE DETAILS.
  - D. VERIFY THAT THE CONCRETE SLAB TO WHICH THE EQUIPMENT IS ANCHORED MEETS THE REQUIREMENTS OF THE APPLICABLE ICC ESR AND THIS OPM.
  - E. VERIFY THAT THE ANCHORS ARE AN ADEQUATE DISTANCE FROM ANY SLAB EDGES OR OPENINGS (SEE TYPICAL DETAIL ON SHEET 2).
  - F. VERIFY THAT ALL NEW OR EXISTING ANCHORS ARE AN ADEQUATE DISTANCE FROM THE UNIT ATTACHMENTS AND CHECK FOR INTERACTION WHERE OTHER ANCHORS ARE WITHIN 18" OR  $6h_{ef}$  FROM THIS UNIT'S ANCHORS.



## ADVANCED STERILIZATION PRODUCTS

### STERRAD 100NX STERILIZER

DES. J. ROBERSON

JOB NO. 11-1517

DATE 4/24/17

SHEET

2

OF 11 SHEETS

#### 10. EXPANSION ANCHORS:

- A. ATTACHMENT IS TO BE MADE WITH THE ANCHORS LISTED BELOW AND INSTALLED AS DESCRIBED IN THE CORRESPONDING ICC REPORT.

Anchor Diameter	Concrete Type	Min. f'c (psi)	Anchor Type	ICC Report No.	Min. Embed.	Min. Spacing	Min. Edge Dist.	Min. Conc. Thickness	Torque Test	Direct Tension
3/8"	Sand Light Weight	3000	Hilti Kwik Bolt TZ	ESR-1917	2"	6.75"	12"	See Detail "A"	25 FT-LB	N/A
1/2"	Normal Weight	3000	Hilti Kwik Bolt TZ	ESR-1917	2"	8"	24"	4"	40 FT-LB	1605 lb
1/2"	Normal Weight	3000	Hilti Kwik Bolt TZ	ESR-1917	3.25"	8"	24"	4"	40 FT-LB	3281 lb

- B. THIS PREAPPROVAL ALLOWS FOR UP TO A MAXIMUM OF 2 ADJACENT CONCRETE SLAB EDGES, 24" AWAY MINIMUM (i.e. - CORNER).

SEE ADJACENT DETAIL FOR ADDITIONAL MINIMUM ALLOWABLE CONCRETE EDGE DISTANCES.

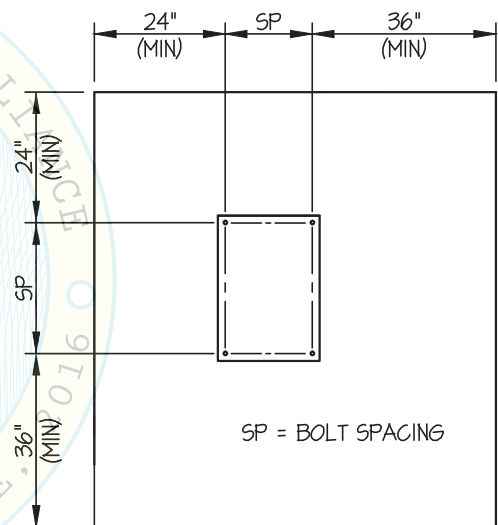
- C. TESTING OF EXPANSION ANCHORS PER 2016 CBC, 1910A.5: TESTING SHALL BE DONE IN THE PRESENCE OF THE SPECIAL INSPECTOR AND A REPORT OF THE TEST RESULTS SHALL BE SUBMITTED TO OSHPD

- (i) AFTER AT LEAST 24 HOURS HAVE ELAPSED SINCE INSTALLATION, DIRECT PULL TENSION TEST OR TORQUE TEST AT LEAST 50% OF THE ANCHORS.

- (ii) ACCEPTANCE CRITERIA:

- DIRECT TENSION TEST: THE ANCHOR SHOULD HAVE NO OBSERVABLE MOVEMENT AT THE TEST LOAD. A PRACTICAL WAY TO DETERMINE OBSERVABLE MOVEMENT IS THAT THE WASHER BECOMES LOOSE.
- TORQUE TEST: THE APPLICABLE TORQUE MUST BE ACHIEVED WITHIN THE FOLLOWING LIMITS: WEDGE TYPE : 1/2 TURN OF THE NUT

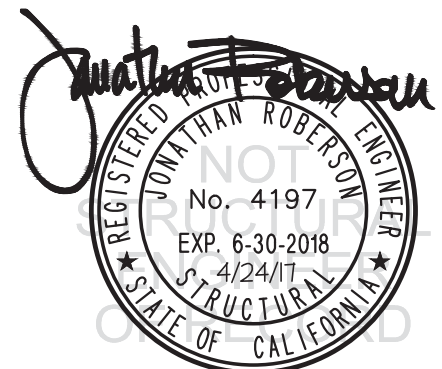
- (iii) IF ANY ANCHOR FAILS, TEST ALL ANCHORS.



TYPICAL CONCRETE EDGE DETAIL

#### 11. BOLTS THROUGH CONCRETE ON METAL DECK

- A. BOLTS SHALL BE TORQUED BY 3/4 TURN OF THE NUTS AFTER THE SNUG TIGHT (THE SNUG-TIGHT CONDITION IS DEFINED AS THE TIGHTNESS REQUIRED TO BRING THE CONNECTED PLIES INTO FIRM CONTACT) CONDITION IS ACHIEVED, UNLESS OTHERWISE NOTED.
- B. THROUGH BOLT HOLES SHALL BE 1/16" LARGER THAN BOLT SIZE (HOLE SIZE = BOLT SIZE + 1/16) FOR CONCRETE.
- C. THROUGH-BOLTS IN CONCRETE SHALL RECEIVE SPECIAL INSPECTION AND TESTING (THROUGH BOLTS WITH STEEL TO STEEL CONNECTION IN TENSION DO NOT REQUIRE TENSION TESTING) IN ACCORDANCE WITH REQUIREMENTS FOR POST-INSTALLED ANCHORS.





## ADVANCED STERILIZATION PRODUCTS

## STERRAD 100NX STERILIZER

DES. J. ROBERSON

JOB NO. 11-1517

DATE 4/24/17

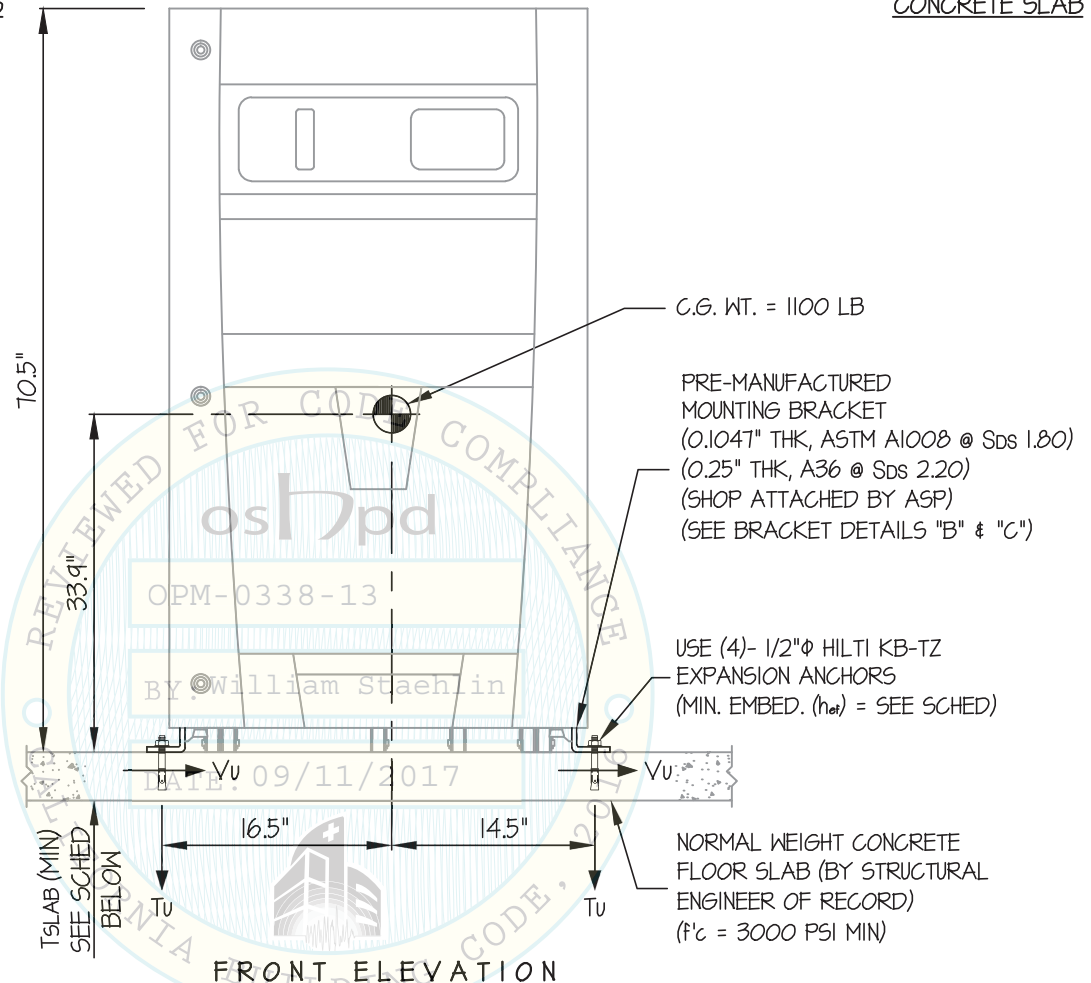
SHEET

3

OF 11 SHEETS

SEISMIC SUPPORTS &amp; ATTACHMENTS

CONCRETE SLAB

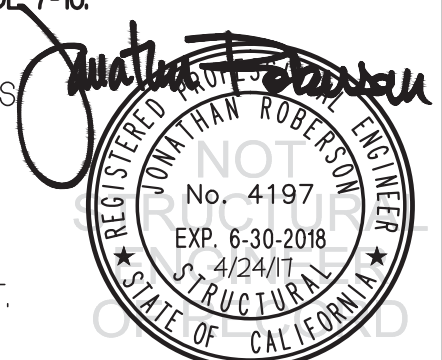


ANCHORS							
MAX Sds	TYPE	DIAM	EFF EMBED	QTY	T <sub>SLAB</sub>	*T <sub>u</sub> (lb)	*V <sub>u</sub> (lb)
180	HILTI KB-TZ	1/2"	2"	4	4"	982	524
220	HILTI KB-TZ	1/2"	3.25"	4	6"	1272	640

## NOTES:

\* VALUES INCLUDE  $\Omega_o$ 

- FORCES ARE DETERMINED PER 2016 CALIFORNIA BUILDING CODE AND ASCE 7-10. STRENGTH DESIGN IS USED. ( $\alpha_p = 1.0$ ,  $l_p = 1.5$ ,  $R_p = 1.5$ ,  $\Omega_o = 1.5$ ,  $z/h = 0$ )
- CENTER OF GRAVITY (C.G.) AND WEIGHT ARE THE GOVERNING PARAMETERS FOR DESIGN. THIS PREAPPROVAL ENCOMPASSES ALL WEIGHTS UP TO THE MAXIMUM WEIGHT SHOWN.
- STRUCTURAL ENGINEER OF RECORD FOR THE BUILDING SHALL PROVIDE SUPPORT STRUCTURE DESIGNED TO SUPPORT WEIGHTS AND FORCES SHOWN IN COMBINATION WITH ALL OTHER LOADS THAT MAY BE PRESENT.
- SEE GENERAL NOTES: SHEETS 1 AND 2.



### ADVANCED STERILIZATION PRODUCTS

### STERRAD 100NX STERILIZER

DES. J. ROBERSON

JOB NO. 11-1517

DATE 4/24/17

SHEET

4

OF 11 SHEETS

SEISMIC SUPPORTS & ATTACHMENTS

MAX  $S_{Ds} \leq 1.80$

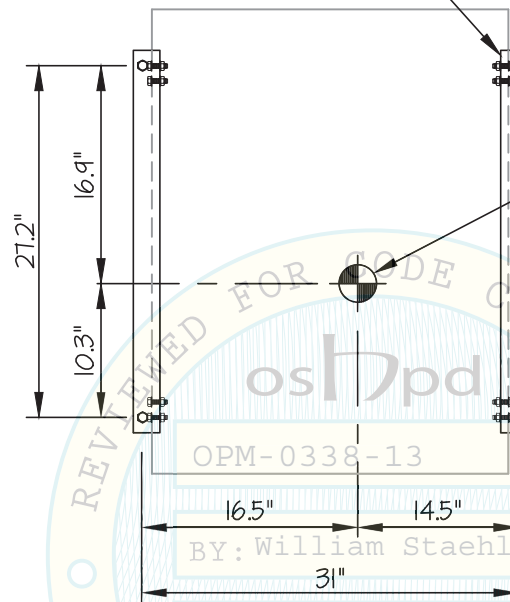
CONCRETE SLAB

UNIT MATERIAL AT ATTACHMENT  
(ASTM A1008 CS TYPE B, 12 GA,  $F_y=26$  KSI MIN)

USE (4)- 1/2"  $\Phi$  HILTI KB-TZ  
EXPANSION ANCHORS  
(MIN. EMBED. ( $h_{ef}$ ) = 2")

C.G. WT. = 1100 LB  
( $\bar{Y} = 33.9"$ )

PRE-MANUFACTURED MOUNTING BRACKET  
(0.1041" THK, ASTM A1008  $F_y=20$  KSI MIN)  
(SHOP ATTACHED BY ASP)  
(SEE BRACKET DETAIL "B")



OPM-0338-13

BY: William Staehlin

PLAN AT BASE



### ADVANCED STERILIZATION PRODUCTS

### STERRAD 100NX STERILIZER

DES. J. ROBERSON

JOB NO. 11-1517

DATE 4/24/17

SHEET

5

OF 11 SHEETS

SEISMIC SUPPORTS & ATTACHMENTS

1.80 < MAX  $S_{ps}$  ≤ 2.20

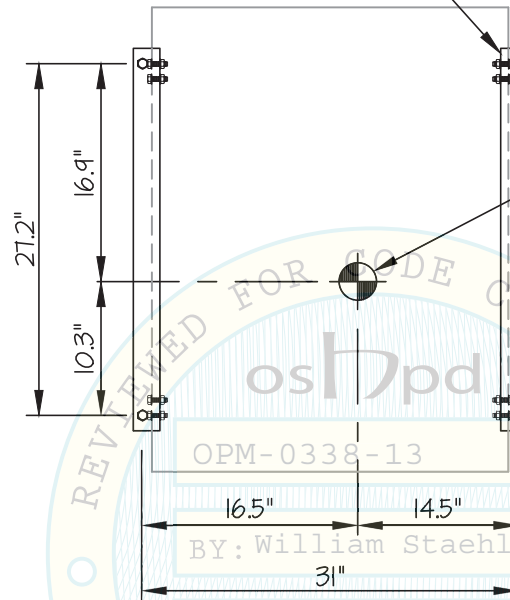
CONCRETE SLAB

UNIT MATERIAL AT ATTACHMENT  
(ASTM A1008 CS TYPE B, 12 GA,  $F_y=26$  KSI MIN)

USE (4)- 1/2"Φ HILTI KB-TZ  
EXPANSION ANCHORS  
(MIN. EMBED. ( $h_{ef}$ ) = 3.25")

C.G. WT. = 1100 LB  
( $\bar{Y}$  = 33.9")

PRE-MANUFACTURED MOUNTING BRACKET  
(0.25" THK, A36,  $F_y=36$  KSI MIN)  
(SHOP ATTACHED BY ASP)  
(SEE BRACKET DETAIL "C")



OPM-0338-13

BY: William Staehlin

PLAN AT BASE



### ADVANCED STERILIZATION PRODUCTS

### STERRAD 100NX STERILIZER

DES. J. ROBERSON

JOB NO. 11-1517

DATE 4/24/17

SHEET

6

OF 11 SHEETS

#### SEISMIC SUPPORTS & ATTACHMENTS

#### CONCRETE SLAB ON METAL DECK

Sds = 1.10

Tu = 1028 LB/BOLT (MAX)

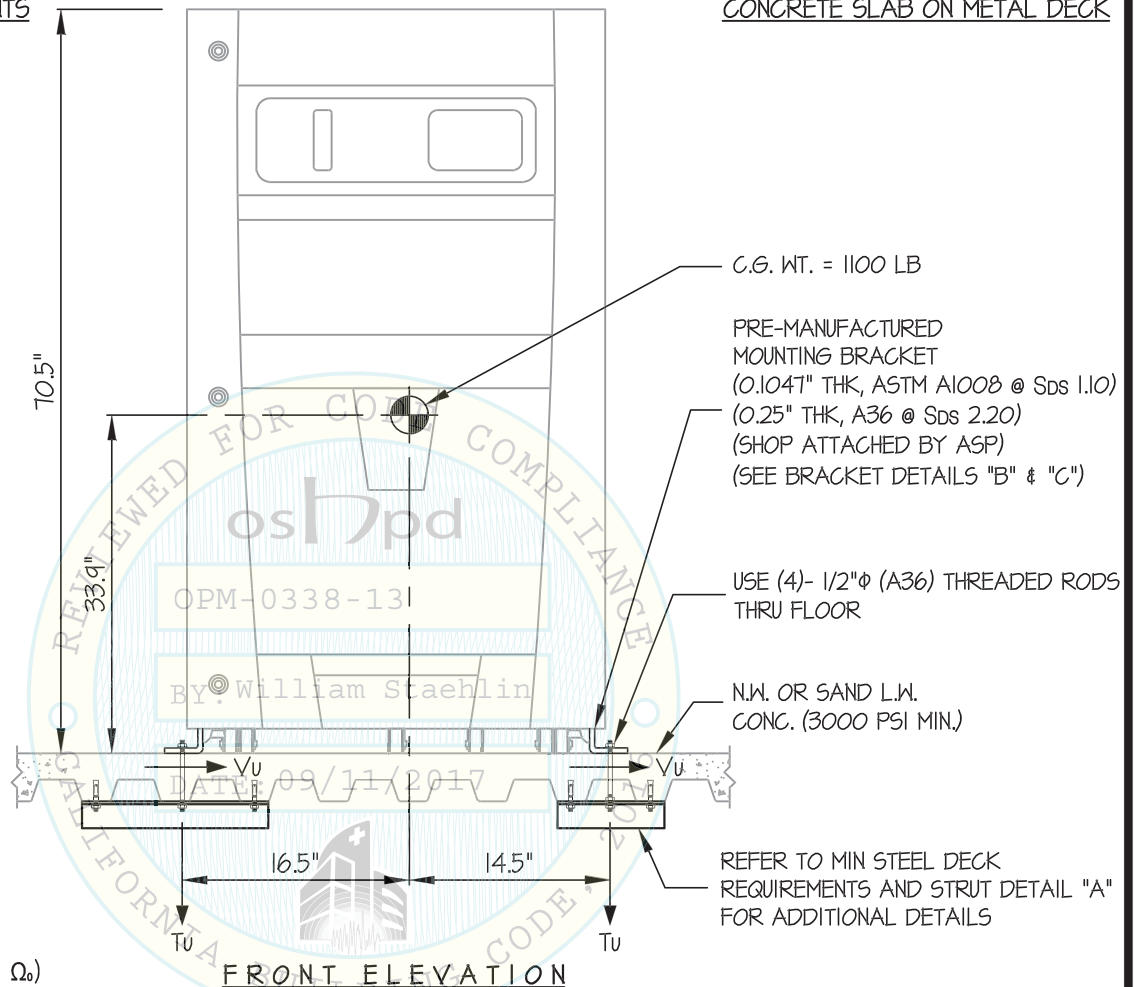
Vu = 567 LB/BOLT (MAX)

Sds = 2.20

Tu = 2384 LB/BOLT (MAX)

Vu = 1134 LB/BOLT (MAX)

(ALL VALUES DO NOT INCLUDE  $\Omega_o$ )



#### NOTES:

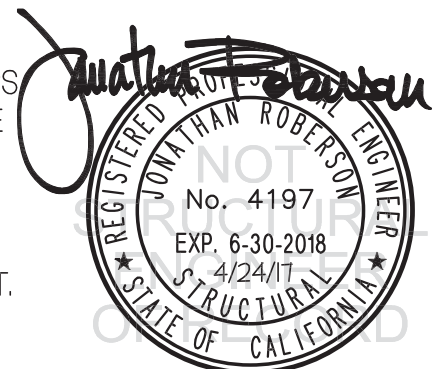
- FORCES ARE DETERMINED PER 2016 CALIFORNIA BUILDING CODE AND ASCE 7-10.

STRENGTH DESIGN IS USED. ( $a_p = 1.0$ ,  $l_p = 1.5$ ,  $R_p = 1.5$ ,  $\Omega_o = 1.5$ ,  $z/h \leq 1$ )

Sds	1.10	2.20
HORIZONTAL FORCE ( $E_h$ )	1.32 $W_p$	2.64 $W_p$
HORIZONTAL FORCE ( $E_{mh}$ )	1.98 $W_p$	3.96 $W_p$
VERTICAL FORCE ( $E_v$ )	0.22 $W_p$	0.44 $W_p$

( $E_{mh} = E_h \times \Omega_o$ ; FOR CONCRETE ANCHORAGE)

- CENTER OF GRAVITY (C.G.) AND WEIGHT ARE THE GOVERNING PARAMETERS FOR DESIGN. THIS PREAPPROVAL ENCOMPASSES ALL WEIGHTS UP TO THE MAXIMUM WEIGHT SHOWN.
- STRUCTURAL ENGINEER OF RECORD FOR THE BUILDING SHALL PROVIDE SUPPORT STRUCTURE DESIGNED TO SUPPORT WEIGHTS AND FORCES SHOWN IN COMBINATION WITH ALL OTHER LOADS THAT MAY BE PRESENT.
- SEE GENERAL NOTES: SHEETS 1 AND 2.





### ADVANCED STERILIZATION PRODUCTS

### STERRAD 100NX STERILIZER

DES. J. ROBERSON

JOB NO. 11-1517

DATE 4/24/17

SHEET

7

OF 11 SHEETS

SEISMIC SUPPORTS & ATTACHMENTS

MAX  $S_{Ds} \leq 1.10$

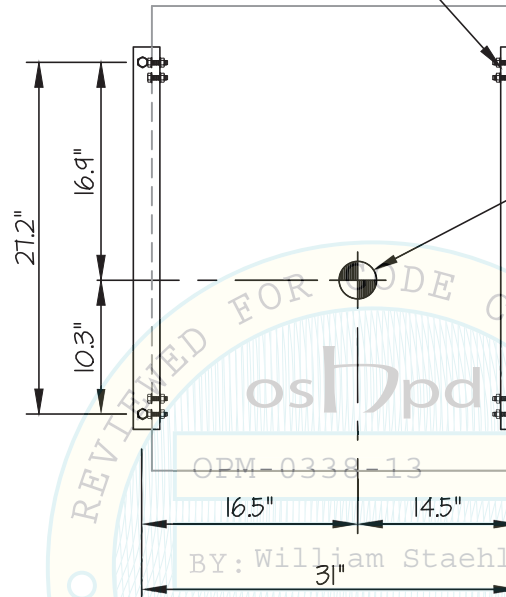
CONCRETE SLAB ON METAL DECK

UNIT MATERIAL AT ATTACHMENT  
(ASTM A1008 CS TYPE B, 12 GA,  $F_y=26$  KSI MIN)

USE (4)- 1/2"  $\phi$  (A36) THREADED RODS  
THRU FLOOR

C.G. WT. = 1100 LB  
( $\bar{Y} = 33.9"$ )

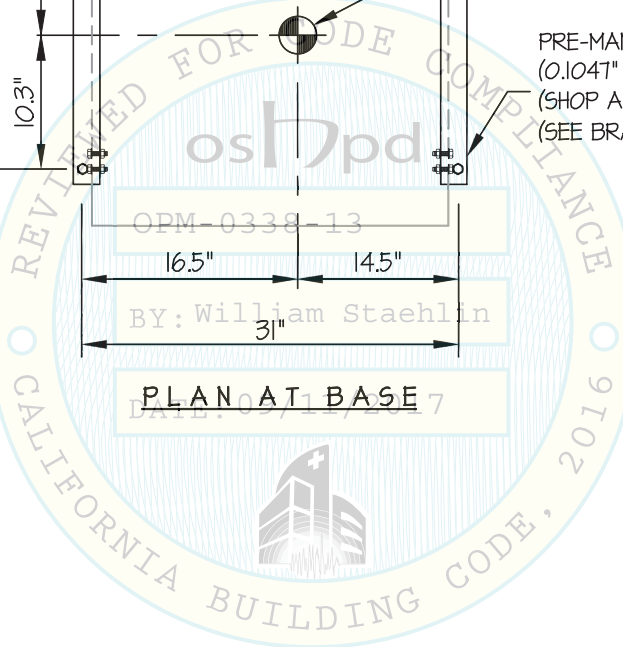
PRE-MANUFACTURED MOUNTING BRACKET  
(0.1041" THK, ASTM A1008  $F_y=20$  KSI MIN)  
(SHOP ATTACHED BY ASP)  
(SEE BRACKET DETAIL "B")



OPM-0338-13

BY: William Staehlin

PLAN AT BASE



## ADVANCED STERILIZATION PRODUCTS

### STERRAD 100NX STERILIZER

DES. J. ROBERSON

JOB NO. 11-1517

DATE 4/24/17

SHEET

8

OF 11 SHEETS

SEISMIC SUPPORTS & ATTACHMENTS

MAX SDS ≤ 200

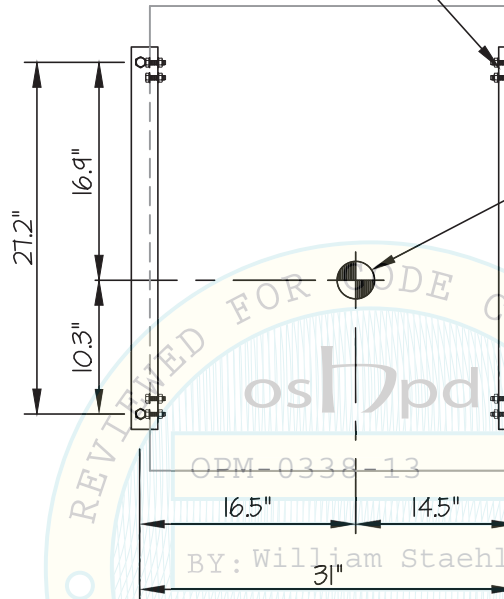
CONCRETE SLAB ON METAL DECK

UNIT MATERIAL AT ATTACHMENT  
(ASTM A1008 CS TYPE B, 12 GA, Fy=26 KSI MIN)

USE (4)- 1/2"φ (A36) THREADED RODS  
THRU FLOOR

C.G. WT. = 1100 LB  
( $\bar{Y}$  = 33.9")

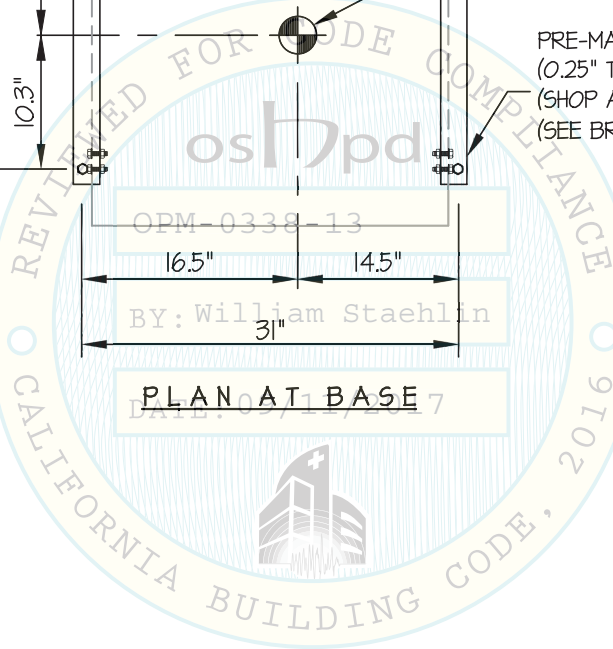
PRE-MANUFACTURED MOUNTING BRACKET  
(0.25" THK, A36, Fy=36 KSI MIN)  
(SHOP ATTACHED BY ASP)  
(SEE BRACKET DETAIL "C")



OPM-0338-13

BY: William Staehlin

PLAN AT BASE



### ADVANCED STERILIZATION PRODUCTS

### STERRAD 100NX STERILIZER

DES. J. ROBERSON

JOB NO. 11-1517

DATE 4/24/17

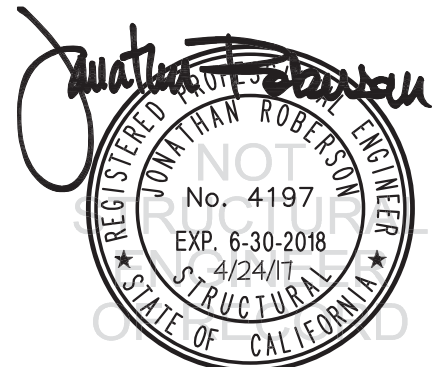
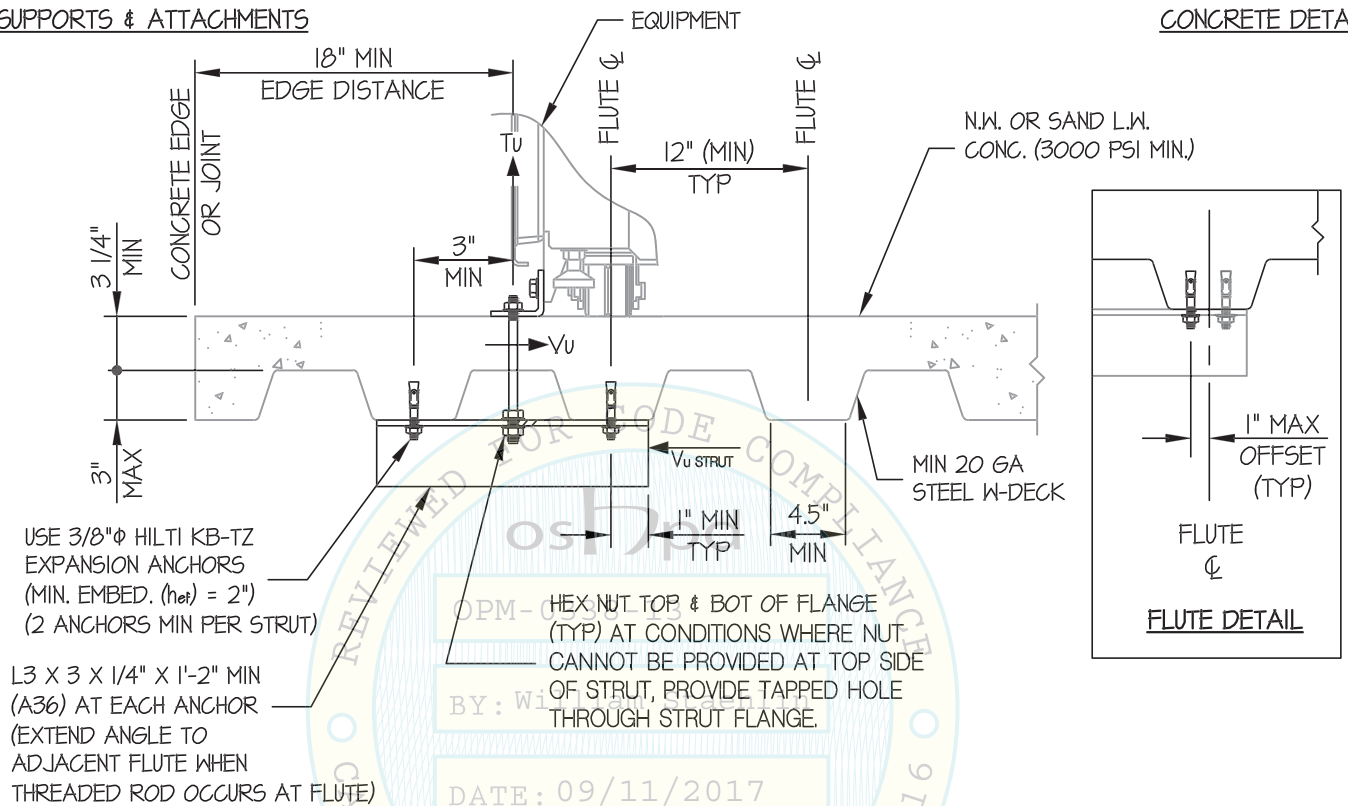
SHEET

9

OF 11 SHEETS

#### SEISMIC SUPPORTS & ATTACHMENTS

#### CONCRETE DETAILS



## ADVANCED STERILIZATION PRODUCTS

### STERRAD 100NX STERILIZER

DES. J. ROBERSON

JOB NO. 11-1517

DATE 4/24/17

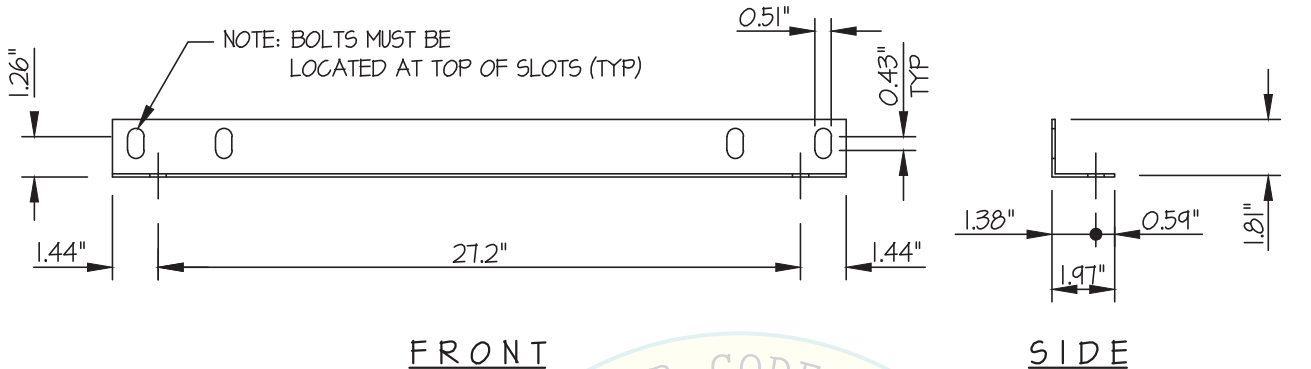
SHEET

10

OF 11 SHEETS

SEISMIC SUPPORTS & ATTACHMENTS

BRACKET DETAILS



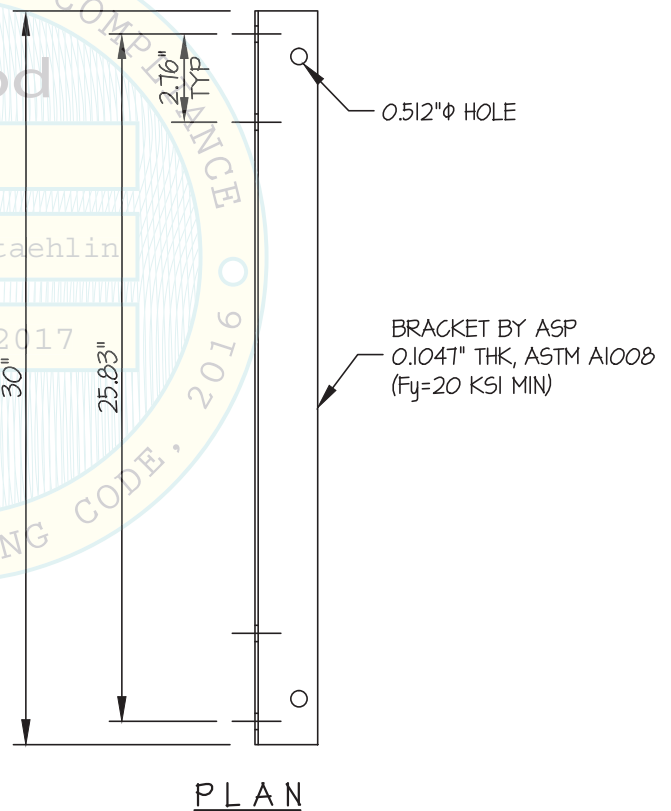
BRACKET DETAILS

(B)

OPM-0338-13

BY: William Staehlin

DATE: 09/11/2017





### ADVANCED STERILIZATION PRODUCTS

### STERRAD 100NX STERILIZER

DES. J. ROBERSON

JOB NO. 11-1517

DATE 4/24/17

SHEET

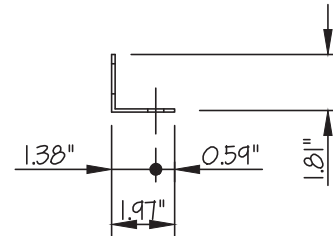
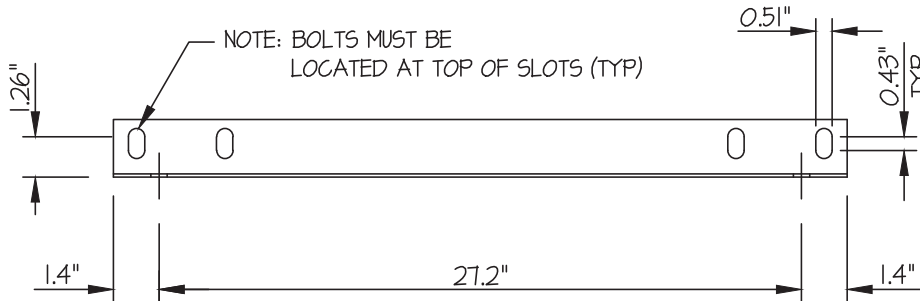
11

OF 11 SHEETS

SEISMIC SUPPORTS & ATTACHMENTS

1.10 ≤ MAX S DS ≤ 2.20

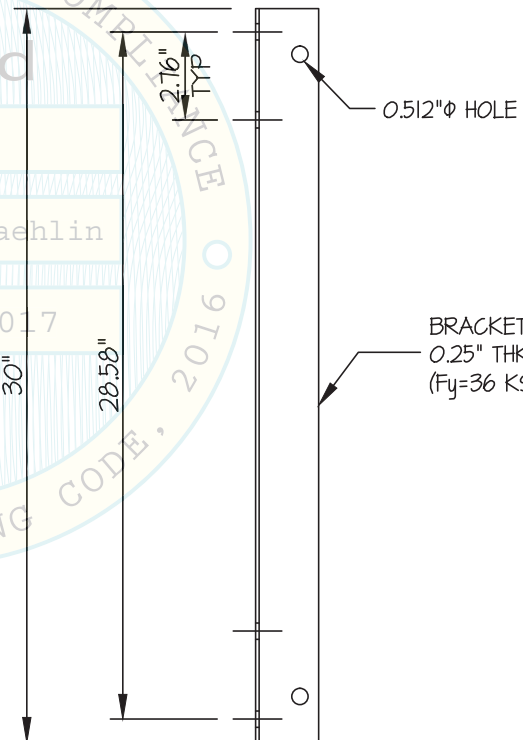
BRACKET DETAILS



FRONT

SIDE

BRACKET DETAILS



PLAN

