



OFFICE OF STATEWIDE HEALTH PLANNING AND DEVELOPMENT
FACILITIES DEVELOPMENT DIVISION

APPLICATION FOR OSHPD SPECIAL SEISMIC
CERTIFICATION PREAPPROVAL (OSP)

OFFICE USE ONLY

APPLICATION #: OSP-0680

OSHPD Special Seismic Certification Preapproval (OSP)

Type: ☒ New ☐ Renewal

Manufacturer Information

Manufacturer: GE HEALTHCARE

Manufacturer's Technical Representative: Tom Farnow

Mailing Address: 3000 N. Grandview Blvd, Waukesha, WI 531881696

Telephone: (888) 406-1101

Email: Tom.Farnow@gehcseismic.com

Product Information

Product Name: CT Systems

Product Type: NA

Product Model Number: Discovery MI Digital Ready PET/CT System (2021) & Discovery IQ PET/CT System (2021)

General Description: Multiple-component medical imaging systems. Special Seismic Certification is limited to functions related to Computed Tomography (CT) medical imaging services.

Mounting Description: Rigid, Floor Mounted DATE: 06/02/2021

Tested Seismic Enhancements: Seismic enhancements made to the test units and/or modifications required to address anomalies during the tests shall be incorporated into the production units.

Applicant Information

Applicant Company Name: EASE LLC

Contact Person: Jonathan Roberson

Mailing Address: 5877 Pine Ave. Suite 210, Chino Hills, CA 91709

Telephone: (909) 606-7622

Email: jon@easeco.com

Title: Principal Engineer



**OFFICE OF STATEWIDE HEALTH PLANNING AND DEVELOPMENT
FACILITIES DEVELOPMENT DIVISION**

California Licensed Structural Engineer Responsible for the Engineering and Test Report(s)

Company Name: EASE

Name: Jonathan Roberson

California License Number: S4197

Mailing Address: 5877 Pine Ave., Suite 210, Chino Hills, CA 91709

Telephone: (951) 295-1892

Email: jon@EASECo.com

Certification Method

☐ GR-63-Core

☒ ICC-ES AC156

☐ IEEE 344

☐ IEEE 693

☐ NEBS 3

☐ Other (Please Specify): _____

Testing Laboratory

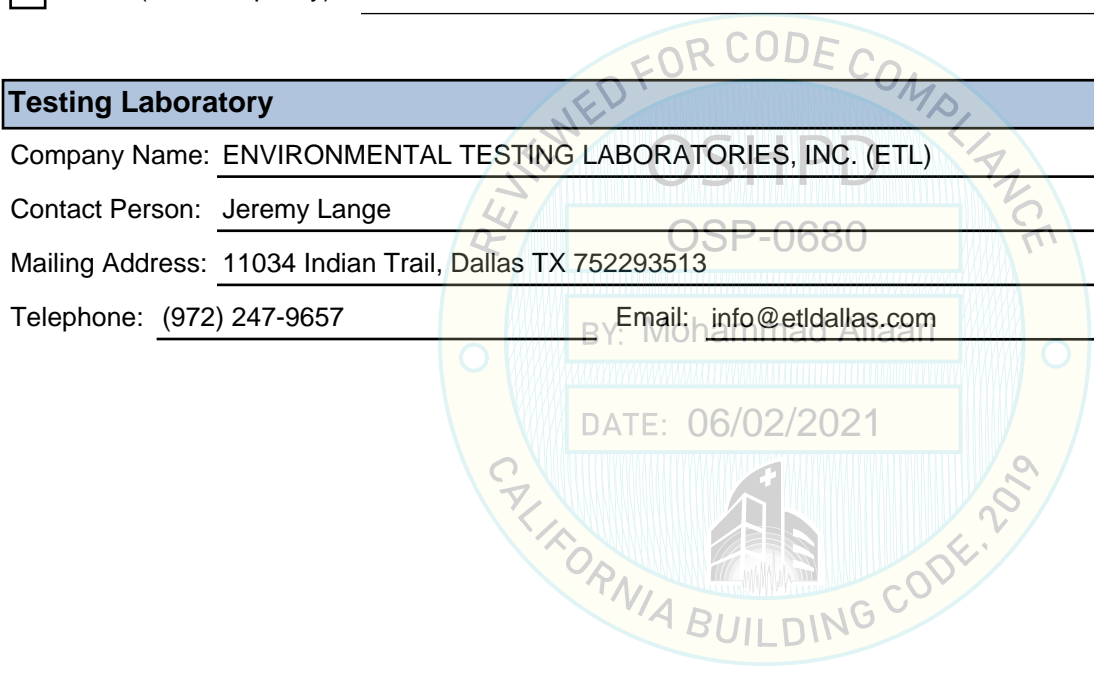
Company Name: ENVIRONMENTAL TESTING LABORATORIES, INC. (ETL)

Contact Person: Jeremy Lange

Mailing Address: 11034 Indian Trail, Dallas TX 752293513

Telephone: (972) 247-9657

Email: info@etldallas.com





OFFICE OF STATEWIDE HEALTH PLANNING AND DEVELOPMENT FACILITIES DEVELOPMENT DIVISION

Seismic Parameters

Design Basis of Equipment or Components (F_p/W_p) = See Table 1 & Table 2.

SDS (Design spectral response acceleration at short period, g) = 1.52

a_p (Amplification factor) = See Attachment 1, Table 1 & Table 2.

R_p (Response modification factor) = See Attachment 1, Table 1 & Table 2.

Ω_0 (System overstrength factor) = 2.0

I_p (Importance factor) = 1.5

z/h (Height ratio factor) = 1

Natural frequencies (Hz) = See Attachment 2

Overall dimensions and weight = See Attachment 2

OSHPD Approval (For Office Use Only) - Approval Expires on 12/31/2025

Date: 6/2/2021

Name: Mohammad Aliaari

Title: Senior Structural Engineer

Special Seismic Certification Valid Up to: SDS (g) = 1.52

z/h = 1

Condition of Approval (if applicable): Functionality verification was limited to functions related to CT imaging.

ATTACHMENT 1: SEISMIC CERTIFIED COMPONENTS

Attachment Page | 1 of 3

TABLE 1:

System Mfr.	GE HEALTHCARE										S _{DS} = 1.52	
System	Discovery MI Digital Ready PET/CT System (2021)										z/h = 1	
SYSTEM COMPONENTS		MODEL NUMBER	APPROX. DIMENSIONS (IN.)			MAX. WT. (LB.)	MOUNT ^[2]	BASIS ^[1]	F _P /W _P	a _P	R _P	Ω ₀
			W	D	H							
PET-CT GANTRIES												
Discovery MI Digital Ready PET-CT Gantry ^[4]			77.4	93.59	76		Floor	UUT1601-1	1.82	1	1 ½	2
Revolution EVO CT Gantry, PET Specific		5454001-170				3940						
25cm Columbia PET Gantry		5990025				3915						
Discovery MI Digital Ready PET-CT Gantry ^[4]			87	70	76		Floor	INT	1.82	1	1 ½	2
Revolution EVO CT Gantry, PET Specific		5454001-170				3940						
Blackbird PET Gantry		5986030				3985						
Discovery 610 PET-CT Gantry			87	103	76		Floor	UUT1216-1	1.82	1	1 ½	2
BrightSpeed Elite CT Gantry, PET Specific		5144691-16				3887						
Optima CT 660 Gantry, PET Specific		5856010				4217						
PATIENT TABLES												
PROSCAN Patient Table		5101900	26	136	22 / 42	1808 ^[3]	Floor	UUT10390-3	1.82	1	1 ½	2
Mobile Ready Global PET-CT Table Ed3		5101900-20	26	136	22 / 42	1808	Floor	SAME	1.82	1	1 ½	2
CONSOLES												
Console Assembly (HDe6)		5940904-10	15.7	26.4	22.7	138	Floor	UUT1805-2	1.10	1	2 ½	2
Revolution EVO Open Console, WSO		5946404-21	15.7	26.4	22.7	138	Floor	SAME	1.10	1	2 ½	2
Revolution Frontier Open Console		5940904-12	15.7	26.4	22.7	142.2	Floor	UUT1818-1	1.10	1	2 ½	2
Operator Console – Z8G4		5946404-22	15.7	26.4	22.7	142.2	Floor	SAME	1.10	1	2 ½	2
Revolution EVO Open Console w/ Z8G4		5946404-21_Z8G4	15.7	26.4	22.7	142.2	Floor	SAME	1.10	1	2 ½	2
POWER DISTRIBUTION												
PDU		2326492-61	27.6	21.7	41.8	818	Floor	UUT1313-2	1.10	1	2 ½	2
NOTES	<div>1. BASIS:<ul style="list-style-type: none">UUT#: Indicates that a unit matching these characteristics was tested as part of this testing program.SAME: Model is physically, mechanically & electrically the same as test specimen. Difference is limited to model number, color and/or software.INT (Interpolate/Extrapolate): indicates a model not specifically tested, and by which seismic certification is established through evaluation of testing of other, similar models in the product line.</div> <div>2. MOUNT<ul style="list-style-type: none">Floor (Rigid Base) Mount: free-standing, base-mounted tower configuration with the component rigidly attached to a supporting structure and no lateral support above the base.</div> <div>3. Patient Table weight does not include the 300 lb. simulated patient load present during testing.</div> <div>4. PET-CT Gantry requires the use of Seismic Option Collector 5737048</div> <div>5. Seismic certification is limited to functions related to Computed Tomography (CT) for diagnostic assessment of trauma.</div> <div>6. <i>Gray italic formatting indicates unit is not a component of system and is included only to provide a basis for seismic qualification of a similar system component.</i></div>											

ATTACHMENT 1: SEISMIC CERTIFIED COMPONENTS

Attachment Page | 2 of 3

TABLE 2:

System Mfr.	GE HEALTHCARE										S _{DS} = 1.52 z/h = 1	
System	Discovery IQ PET/CT System (2021)											
SYSTEM COMPONENTS		MODEL NUMBER	APPROX. DIMENSIONS (IN.)			MAX. WT. (LB.)	MOUNT ^[2]	BASIS ^[1]	F _P /W _P	a _P	R _P	Ω ₀
			W	D	H							
PET-CT GANTRIES												
Discovery IQ PET-CT Gantry			89	101	76		Floor	UUT1612-1	1.82	1	1 ½	2
Optima CT-540 Gantry, PET Specific		5432539-22				3887						
25cm Odyssey PET Gantry		5900025-20				3500						
Discovery IQ PET-CT Gantry			89	101	76		Floor	INT	1.82	1	1 ½	2
Optima CT-540 Gantry, PET Specific		5432539-22				3887						
20cm Odyssey PET Gantry		5900020-20				3450						
Discovery IQ PET-CT Gantry			89	101	76		Floor	INT	1.82	1	1 ½	2
Optima CT-540 Gantry, PET Specific		5432539-22				3887						
15cm Odyssey PET Gantry		5900015-20				3400						
Discovery IQ PET-CT Gantry			89	101	76		Floor	INT	1.82	1	1 ½	2
Optima CT-540 Gantry, PET Specific		5432539-22				3887						
10cm Odyssey PET Gantry		5900010-20				3350						
Discovery IQ PET-CT Gantry			77.4	93.59	76		Floor	UUT1409-1	1.82	1	1 ½	2
Optima Elite CT Gantry, PET Specific		5432539-20				3887						
25cm Columbia PET Gantry		5990025				3800						
PATIENT TABLES												
PROSCAN Patient Table		5101900	26	136	22 / 42	1808 ^[3]	Floor	UUT10390-3	1.82	1	1 ½	2
Mobile Ready Global PET-CT Table Ed3		5101900-20	26	136	22 / 42	1808	Floor	SAME	1.82	1	1 ½	2
CONSOLES												
Open console (HP Z8G4)		5946404-15	15.8	26.4	22.7	142	Floor	UUT1914-2	1.10	1	2 ½	2
Open console (HP Z8G4)		5941604-26	15.8	26.4	22.7	142	Floor	SAME	1.10	1	2 ½	2
POWER DISTRIBUTION												
NGPDU-71		2326492-71	27.6	21.7	41.8	813	Floor	UUT1308-2	1.10	1	2 ½	2
NOTES	1. BASIS: <ul style="list-style-type: none">UUT#: Indicates that a unit matching these characteristics was tested as part of this testing program.SAME: Model is physically, mechanically & electrically the same as test specimen. Difference is limited to model number, color and/or software.INT (Interpolate/Extrapolate): indicates a model not specifically tested, and by which seismic certification is established through evaluation of testing of other, similar models in the product line.											

Table continues next page

ATTACHMENT 1: SEISMIC CERTIFIED COMPONENTS

Attachment Page | 3 of 3

TABLE 2:

System Mfr.	GE HEALTHCARE	S_{DS} = 1.52 z/h = 1
System	Discovery IQ PET/CT System (2021)	
	<p>2. MOUNT:</p> <ul style="list-style-type: none">• <u>Floor (Rigid Base) Mount:</u> free-standing, base-mounted tower configuration with the component rigidly attached to a supporting structure and no lateral support above the base. <p>3. Patient Table weight does not include the 300 lb. simulated patient load present during testing.</p> <p>4. Seismic certification is limited to functions related to Computed Tomography (CT) for diagnostic assessment of trauma.</p> <p>5. <i>Gray italic formatting indicates unit is not a component of system and is included only to provide a basis for seismic qualification of a similar system component.</i></p>	



ATTACHMENT 2: TEST SPECIMEN SUMMARY


Attachment Page | 1 of 5

UUT1601-1 Discovery MI Digital Ready PET-CT Gantry						
Manufacturer:			GE Healthcare			
Identification:			CT	PET		
			Model No.:	5454001-170	5990025	
			Serial No.:	10002	10002	
Description:			<p>System component of the Discovery PET-CT System: The tested configuration included both a PET gantry and a CT gantry in a complete PET-CT assembly.</p> <p>Functionality verification was limited to functions related to CT imaging.</p> <p>Tested with enhancements to the standard production model that are included in Seismic Option Collector 5737048.</p>			
Mounting:			<u>Rigid Base (Floor) mounted using</u> (11) – 5/8" dia GR 8 bolts.			
Dimensions (in.)				Lowest Resonant Frequency (Hz.)		
Width	Depth	Height	Weight (lb.)	Side-Axis	Front-Axis	Vert-Axis
77.4	93.59	76		8.6	8.1	14.7
ICC-ES AC156 Shake Table Test Parameters				Code: 2019 CBC		
S _{DS} (G)	z/h	I _p	A _{FLX-H} (G)	A _{RIG-H} (G)	A _{FLX-V} (G)	A _{RIG-V} (G)
2.0	1	1.5	3.2	2.4	1.68	0.68
2.5	0					
Unit satisfied AC156 requirements for structural integrity and remained functional per manufacturer requirement.						

UUT1216-1 Discovery 610 PET-CT Gantry						
Manufacturer:		GE Healthcare				
Identification:		PET Model: 5856010 CT Model 5144691-16 PET S/N: 12658PT1 CT S/N: 256315HM3				
Description:		<p>System component of the Discovery 610 PET/CT System:</p> <ul style="list-style-type: none">• BrightSpeed Elite CT Gantry (Brightspeed MERI)• Discovery 610 PET Gantry <p>The tested configuration included both a PET gantry and a CT gantry in a complete PET-CT assembly.</p> <p>Functionality verification was limited to functions related to CT imaging.</p>				
Mounting:		<p><u>Rigid Base (Floor) Mounted using</u> (4) – 5/8" Dia Gr. 8 bolts to interface frame (CT) (6) – 5/8" Dia Gr. 8 bolts to interface frame (PET) (10 anchors total)</p>				
Dimensions (in.)				Weight (lb.)	Lowest Resonant Frequency (Hz.)	
Width	Depth	Height	Side-Axis		Front-Axis	Vert-Axis
87	103	76	6.8		8.3	9.5
ICC-ES AC156 Shake Table Test Parameters						Code: 2019 CBC
S _{DS} (G)	z/h	I _p	A _{FLX-H} (G)	A _{RIG-H} (G)	A _{FLX-V} (G)	A _{RIG-V} (G)
2.0	1	1.5	3.2	2.4	1.74	0.70
2.6	0					
Unit satisfied AC156 requirements for structural integrity and remained functional per manufacturer requirement.						

ATTACHMENT 2: TEST SPECIMEN SUMMARY


Attachment Page | 2 of 5


UUT10390-3 PROSCAN Patient Table							
Manufacturer:		GE Healthcare					
Identification:		P/N: 5101900					
		S/N: 176453HM9					
Description:		System component of several GEHC PET/CT systems. Tested as component of Discovery PET/CT 690 System					
Mounting:		<u>Rigid Base (Floor) Mounted using</u> (4) - 5/8" diameter SAE J429 Grade 8 bolts to interface plate.					
							
Dimensions (in.)				Weight (lb.)	Lowest Resonant Frequency (Hz.)		
Width	Depth	Height	X-Axis		Y-Axis	Vert-Axis	
25.6	135.8	22 / 42	---		5.3	>33	
ICC-ES AC156 Shake Table Test Parameters					CODE: 2019 CBC		
S _{DS} (G)	z/h	I _P	A _{FLX-H} (G)	A _{RIG-H} (G)	A _{FLX-V} (G)	A _{RIG-V} (G)	
1.52	1	1.5	2.43	1.82	1.02	0.41	
Unit satisfied AC156 requirements for structural integrity and remained functional per manufacturer requirement.							

UUT1805-2 Console Assembly (HDe6) 06/02/2021						
Manufacturer:			GE Healthcare			
Identification:			Model No.: 5940904-10 Serial No.: HDe60_002			
DESCRIPTION:			Component of the Revolution Frontier CT system. Open style console HP Z840 Computer			
Description:			<u>Rigid Base (Floor) mounted using:</u> GE console to floor mounting assembly (3 locations total): Console Anti Seismic Bracket (P/N 5357148-3) each w/ - (2) – M6 x 16 10.9 Class bolts (Torque = 7.9 N-m) (P/N 2262896-30) - (2) – Flat washers (P/N 2001-M8-02) - (1) – 3/8" dia. ASTM A574 Socket Head Cap Screw w/ washer.			
DIMENSIONS (in.)				Weight (lb.)	LOWEST RESONANT FREQUENCY (Hz.)	
Width	Depth	Height	Side-Axis		Front-Axis	Vert-Axis
15.7	26.4	22.7	138		14.46	30.24
ICC-ES AC156 SHAKE TABLE TEST PARAMETERS						CODE: 2019 CBC
S _{DS} (G)	z/h	I _P	A _{FLX-H} (G)	A _{RIG-H} (G)	A _{FLX-V} (G)	A _{RIG-V} (G)
2.0 2.5	1 0	1.5	3.2	2.4	1.68	0.68
Unit satisfied AC156 requirements for structural integrity and remained functional per manufacturer requirement.						

ATTACHMENT 2: TEST SPECIMEN SUMMARY


Attachment Page | 3 of 5


UUT1818-1 Console Assembly						
Manufacturer: GE Healthcare						
Identification: Model No.: 5940904-12 Serial No.: 460049CN1						
Description: Component of the Revolution Frontier CT System. HP Z8 Computer mounted in an open style console.						
Mounting: Rigid Base (Floor) mounted using: GE console to floor mounting assembly (3 locations total): Console Anti Seismic Bracket (P/N 5357148-3) each w/ - (2) – M6 x 16 flange screw, hexagon socket, black oxide RoHS fastener (Torque=7.9 N-m) (P/N 2262896-30) - (2) – Flat washers (P/N 2001-M8-02) - (1) – 3/8" dia. ASTM A574 Socket Head Cap Screw w/ washer.						
Dimensions (in.)				Lowest Resonant Frequency (Hz.)		
Width	Depth	Height	Weight (lb.)	Side-Axis	Front-Axis	Vert-Axis
15.7	26.4	22.7	142.2	15.12	34.41	48.65
ICC-ES AC156 SHAKE TABLE TEST PARAMETERS				CODE: 2019 CBC		
S _{DS} (G)	z/h	I _P	A _{FLX-H} (G)	A _{RIG-H} (G)	A _{FLX-V} (G)	A _{RIG-V} (G)
2.0	1	1.5	3.2	2.4	1.68	0.68
2.5	0					
Unit satisfied AC156 requirements for structural integrity and remained functional per manufacturer requirement.						

UUT1313-2				NGPDU-61		
Manufacturer:		GE Hangwei Medical Systems CO., LTD				
Identification:		Model No.: 2326492-61				
		Serial No.: 322132HM2				
Description:		System component of several GEHC CT systems. Tested as component of Optima CT580 System.				
Mounting:		<p><u>Rigid Base (Floor) mounted using:</u></p> <p>(2) – 3/8" dia. ASTM A574 Socket Head Cap Screws w/ washer through each GE mounting bracket to floor plate. (4 anchors total)</p> <p><u>GE mounting assembly including:</u></p> <p>(2) – Seismic Bracket, System Cabinet (P/N 2354563-2) Each bracket mounted to cabinet w/:</p> <p>(2) – M10-1.5 X25mm Class 12.9 Socket Head Cap Screw, Black Oxide (Torque= 38.4 N-m)</p> <p>(2) – M10 Lock Washer (P/N 2203-M10-07)</p> <p>(2) – M10 Flat Washer (P/N 2000-M10-03)</p>				
Dimensions (in.)			Weight (lb.)	Lowest Resonant Frequency (Hz.)		
Width	Depth	Height		Side-Axis	Front-Axis	Vert-Axis
27.6	21.7	41.8		796 + 22 brackets = 818	15.7	19.9
ICC-ES AC156 SHAKE TABLE TEST PARAMETERS						CODE: 2019 CBC
S _{DS} (G)	z/h	I _P	A _{FLX-H} (G)	A _{RIG-H} (G)	A _{FLX-V} (G)	A _{RIG-V} (G)
2.0	1.0	1.5	3.20	2.40	1.74	0.70
2.6	0.0					
Unit satisfied AC156 requirements for structural integrity and remained functional per manufacturer requirement.						

ATTACHMENT 2: TEST SPECIMEN SUMMARY

Attachment Page | 4 of 5

UUT1612-1 Discovery IQ PET-CT Gantry						
Manufacturer: GE Healthcare						
Identification:		CT Gantry PET Gantry				
Model:	5432539-22	5900025-20				
Serial:	441940HM4					
Description:				System component of the Discovery IQ PET-CT System. The tested configuration included both a PET gantry and a CT gantry in a complete PET-CT assembly. Functionality verification was limited to functions related to CT imaging.		
Mounting:				<u>Rigid Base (Floor) mounted using</u> (10) – 5/8" dia GR 8 bolts.		
Dimensions (in.)				Lowest Resonant Frequency (Hz.)		
Width	Depth	Height	Weight (lb.)	Side-Axis	Front-Axis	Vert-Axis
89	101	76	7387	10.4	9.0	21.0
ICC-ES AC156 Shake Table Test Parameters				Code: 2019 CBC		
S _{DS} (G)	z/h	I _p	A _{FLX-H} (G)	A _{RIG-H} (G)	A _{FLX-V} (G)	A _{RIG-V} (G)
2.0	1	1.5	3.2	2.4	1.68	0.68
2.5	0					
Unit satisfied AC156 requirements for structural integrity and remained functional per manufacturer requirement.						

UUT1409-1 Discovery IQ PET-CT Gantry								
Manufacturer:		GE Healthcare						
Identification:		PET Model: 5900025 PET S/N: 13465PT0					CT Model 5432539-20 CT S/N: 256329HM4	
Description:								
System Component of the Discovery IQ PET-CT System: <ul style="list-style-type: none">• Optima Elite CT-540 Gantry• 25cm Comet PET Gantry The tested configuration included both a PET gantry and a CT gantry in a complete PET-CT assembly. Functionality verification was limited to functions related to CT imaging.								
Mounting:		<u>Rigid Base (Floor) mounted using</u> (12) – 5/8" dia GR 8 hex head bolts to interface frame.						
Dimensions (in.)				Weight (lb.)	Lowest Resonant Frequency (Hz.)			
Width	Depth	Height	Side-Axis		Front-Axis	Vert-Axis		
77.4	93.59	76	7687		7.4	8.8	8.9	
ICC-ES AC156 Shake Table Test Parameters						Code: 2019 CBC		
S _{DS} (G)	z/h	I _P	A _{FLX-H} (G)	A _{RIG-H} (G)	A _{FLX-V} (G)	A _{RIG-V} (G)		
2.0	1	1.5	3.2	2.4	1.68	0.68		
2.5	0							
Unit satisfied AC156 requirements for structural integrity and remained functional per manufacturer requirement.								

ATTACHMENT 2: TEST SPECIMEN SUMMARY

Attachment Page | 5 of 5

UUT 1914-2 Open Console w/ Z8G4

Manufacturer:	GE Hangwei Medical Systems Co., LTD.
Identification:	Model No.: 5946404-15 Serial No.: 000000HM1
Description:	Component of the Revolution Maxima / Revolution Ace CT Systems - HP Z8G4 Computer - Open style console - Configuration controlled verification unit that is equivalent to standard production.
Mounting:	<u>Rigid Base (Floor) mounted using:</u> GE Console Anchor Kit 5812703-2 (3) – 3/8" dia. SAE J429 Grade 8 bolts to test fixture. NOTE: Console Anchor Kit 5812703-2 is included standard w/ console.



Dimensions (in.)				Lowest Resonant Frequency (Hz.)		
Width	Depth	Height	Weight (lb.)	Side-Axis	Front-Axis	Vertical-Axis
15.8	26.4	22.7	141.5 w/ brackets	14.6	30.1	26.2

ICC-ES AC156 Shake Table Test Parameters						Code: 2016 CBC
S _{DS} (G)	z/h	I _P	A _{FLX-H} (G)	A _{RIG-H} (G)	A _{FLX-V} (G)	A _{RIG-V} (G)
2.0	1	1.5	3.2	2.4	1.68	0.68
2.5	0					

Unit satisfied AC156 requirements for structural integrity and remained functional per manufacturer requirement.

UUT1308-2 NGPDU-71

Manufacturer:	GE Healthcare
Identification:	Model No.: 2326492-71
Description:	System component of the Optima CT540 / CT540+, Discovery NM/CT 670 Pro and Discovery NM/CT 670 CZT.
Mounting:	<u>Rigid Base (Floor) mounted using:</u> (2) – 3/8" dia. ASTM A574 Socket Head Cap Screws w/ washer through each GE mounting bracket to floor plate. (4 anchors total) <u>GE mounting assembly including:</u> (2) – Seismic Bracket, System Cabinet (P/N 2354563-2) Each bracket mounted to cabinet w/ (2) – M10 x 25mm Class 12.9 bolt (Torque= 38.4 N-m) (2) – M10 Lock Washer (P/N 2203-M10-07) (2) – M10 Flat Washer (P/N 2000-M10-03)



Dimensions (in.)				Lowest Resonant Frequency (Hz.)		
Width	Depth	Height	Weight (lb.)	Side-Axis	Front-Axis	Vert-Axis
27.6	21.7	41.8	813	17.2	15.6	32.6

ICC-ES AC156 SHAKE TABLE TEST PARAMETERS						CODE: 2019 CBC
S _{DS} (G)	z/h	I _P	A _{FLX-H} (G)	A _{RIG-H} (G)	A _{FLX-V} (G)	A _{RIG-V} (G)
2.0	1.0	1.5	3.20	2.40	1.74	0.70
2.6	0.0					

Unit satisfied AC156 requirements for structural integrity and remained functional per manufacturer requirement.